

Appendix A

Freight Facility Inventory



Freight Facility Inventory
Port Market Analysis & Master Plan
Havana Regional Port District

ID	Name	City	County	Type	Truck	Rail	Barge	Commodities	Latitude	Longitude
1	Westermeyer Industries Inc.	Bluffs	Scott	Industry	Yes	No	No	components for A/C & refidge systems (steel?)	39.72959137	-90.56604767
2	CGB	Naples	Scott	Terminal	Yes	Yes	Yes	grain	39.74792099	-90.61478424
3	CGB	Naples	Scott	Terminal	Yes	Yes	Yes	fertilizer	39.74285507	-90.6177597
4	ADM	Naples	Scott	Terminal	Yes	No	Yes	grain	39.7647171	-90.60557556
5	PrairieLand FS	Meredosia	Pike	Terminal	Yes	No	Yes	various dry and liquid bulk	39.8363533	-90.57254791
6	Augusta Farmers Co-Op	Augusta	Hancock	Industry	Yes	Yes	No	grain	40.23417664	-90.9522171
7	Rainbow Resource Center	West Jersey	Stark	Dist_Center	Yes	No	No	educational products	40.98915482	-89.88700867
8	Nutrien Ag Solutions	Princeville	Stark	Dist_Center	Yes	No	No	seed & fertilizer	40.97466666	-89.75640869
10	Versa Press	East Peoria	Woodford	Industry	Yes	No	No	book manufacturer	40.80121613	-89.52403259
11	Contech Engineered Solutions	Metamora	Woodford	Industry	Yes	No	No	construction materials (steel pipes)	40.78805923	-89.38262939
12	Grainland Co-Op	Eureka	Woodford	Industry	Yes	Yes	No	grain	40.72276688	-89.31066132
13	Cox Transfer	Eureka	Woodford	Carrier	Yes	Potential	No	trucking company	40.72004318	-89.29866791
14	Parsons Company	Goodfield	Woodford	Industry	Yes	No	No	metal manufacturing	40.62631226	-89.27906036
15	CNH Industrial	Goodfield	Woodford	Industry	Yes	No	No	ag & construction equipment manufacturer	40.62575912	-89.26239777
16	United Prairie	Danvers	McLean	Industry	Yes	No	No	grain, seed, & fertilizer	40.52707672	-89.17824554
17	Stanford Grain	Stanford	McLean	Industry	Yes	No	No	grain	40.43537903	-89.21977234
18	Evergreen FS	McLean	McLean	Industry	Yes	Yes	No	grain	40.31951141	-89.16507721
19	ADM	Waynesville	DeWitt	Industry	Yes	No	No	grain	40.18165588	-89.13496399
20	Western Grain Marketing	Plymouth	McDonough	Industry	Yes	Potential	No	grain	40.34539795	-90.89078522
21	Central Stone	Colchester	McDonough	Industry	Yes	No	No	aggregates	40.3649025	-90.82804108
22	Nutrien Ag Solutions	Macomb	McDonough	Dist_Center	Yes	No	No	seed & fertilizer	40.41719437	-90.61693573
23	Western Grain Marketing	Colchester	McDonough	Industry	Yes	Potential	No	grain	40.42222977	-90.80381775
24	Yetter	Colchester	McDonough	Industry	Yes	Potential	No	ag equipment manufacturer	40.4263649	-90.78520203
25	Helena Chemical	Adair	McDonough	Dist_Center	Yes	No	No	seed & fertilizer	40.4241333	-90.5069046
26	Western Grain Marketing	Macomb	McDonough	Industry	Yes	No	No	grain	40.44652939	-90.6269989
27	Yetter	Macomb	McDonough	Industry	Yes	Potential	No	ag equipment manufacturer	40.46582031	-90.65435028
28	NTN Bower	Macomb	McDonough	Industry	Yes	Potential	No	steel bearings	40.46557236	-90.63556671
29	Pella	Macomb	McDonough	Industry	Yes	No	No	window & door manufacturer	40.46101761	-90.62071991
30	Western Grain Marketing	Macomb	McDonough	Industry	Yes	Yes	No	grain (with rail loop)	40.45033646	-90.50391388
31	Nutrien Ag Solutions	Blandinsville	McDonough	Dist_Center	Yes	No	No	seed & fertilizer	40.5338974	-90.86743927
32	Roquette	Blandinsville	McDonough	Industry	Yes	Yes	No	grain	40.55630112	-90.85381317
33	West Central FS	Sciota	McDonough	Industry	Yes	Yes	No	grain	40.55982971	-90.75211334
34	Seedbox Solution	Good Hope	McDonough	Industry	Yes	No	No	seed	40.55217361	-90.65400696
35	Midwest Control Products	Bushnell	McDonough	Industry	Yes	Potential	No	steel components	40.55056381	-90.52268219
36	TriOak Foods	Bushnell	McDonough	Industry	Yes	Yes	No	pork producer, feed manufacturer	40.5504837	-90.51866913
37	Vaughan & Bushnell Manufacturing	Bushnell	McDonough	Industry	Yes	Potential	No	hand tool manufacturing (steel)	40.54992294	-90.51246643
38	Schuld Bushnell	Bushnell	McDonough	Industry	Yes	Potential	No	feed bins (steel)	40.55286789	-90.52011108
39	Tri-County Seeds	Sciota	McDonough	Dist_Center	Yes	No	No	seed	40.58864594	-90.77870178
40	Hiel Trucking	Prairie City	McDonough	Carrier	Yes	Potential	No	trucking & truck repair	40.6117363	-90.46642303
41	Riden Farm Supply	Bushnell	McDonough	Dist_Center	Yes	No	No	seed & fertilizer	40.616436	-90.56144714
42	Dot	Mt. Sterling	Brown	Dist_Center	Yes	No	No	food product distribution	39.97613907	-90.75495148
43	Dot	Mt. Sterling	Brown	Dist_Center	Yes	No	No	food product distribution	39.98635483	-90.7749939
44	Hills Industries	Mt. Sterling	Brown	Dist_Center	Yes	No	No	PVC pipe fittings & field drain tiles	39.97768402	-90.76045227
45	Dearwester Grain Services	Mt. Sterling	Brown	Industry	Yes	No	No	grain	39.97611237	-90.76037598
46	PrairieLand FS	Mt. Sterling	Brown	Industry	Yes	No	No	grain	39.98064041	-90.7691803
47	Timewell Drainage Products	Timewell	Brown	Industry	Yes	No	No	plastic corrugated pipe	39.99650955	-90.87484741
48	Nutrien Ag Solutions	Mt. Sterling	Brown	Dist_Center	Yes	No	No	seed & fertilizer	39.99623489	-90.80764771
49	ADM	Beardstown	Schuyler	Industry	Yes	Potential	Yes	grain	40.05294037	-90.43234253
50	Western Grain Marketing	Rushville	Schuyler	Industry	Yes	No	No	grain, seed, & fertilizer	40.12610626	-90.57051849
51	PrairieLand FS	Camden	Schuyler	Industry	Yes	No	No	grain	40.14274216	-90.78967285
52	Western Grain Marketing	Littleton	Schuyler	Industry	Yes	No	No	grain	40.23476791	-90.62212372
53	Sunrise FS	Arenzville	Cass	Industry	Yes	Potential	No	grain, seed, & fertilizer	39.87787628	-90.37670135

ID	Name	City	County	Type	Truck	Rail	Barge	Commodities	Latitude	Longitude
54	RCM Co-Op	Ashland	Cass	Industry	Yes	No	No	grain	39.89008713	-90.00617981
55	Brandt	Ashland	Cass	Dist_Center	Yes	No	No	seed & fertilizer	39.89258194	-90.00035858
56	Western Grain Marketing	Philadelphia	Cass	Industry	Yes	No	No	grain	39.92090607	-90.12055969
57	Precision Tank	Virginia	Cass	Industry	Yes	No	No	steel tanks (for ag & chemicals)	39.92489243	-90.19326782
58	Brandt	Virginia	Cass	Dist_Center	Yes	No	No	seed & fertilizer	39.9487915	-90.19940948
59	Sunrise FS	Virginia	Cass	Industry	Yes	No	No	grain, seed, & fertilizer	39.9516983	-90.20318604
60	Western Grain Marketing	Bluff Springs	Cass	Industry	Yes	No	No	grain, seed, & fertilizer	39.98788071	-90.34658051
61	JBS	Beardstown	Cass	Industry	Yes	Yes	No	food processing	39.99387741	-90.40450287
62	Sharkey Transportation	Beardstown	Cass	Carrier	Yes	No	No	trucking company	39.99570847	-90.40631104
63	Greif	Beardstown	Cass	Industry	Yes	Potential	No	industrial containers (steel, plastic, fiber)	39.99720383	-90.40987396
64	Kent Feeds	Beardstown	Cass	Industry	Yes	Yes	No	animal feed	40.00001144	-90.41109467
65	Clarkson Grain	Beardstown	Cass	Terminal	Yes	No	Yes	grain	40.01409149	-90.44517517
66	Cargill	Beardstown	Cass	Terminal	Yes	No	Yes	grain	40.01555252	-90.44168091
67	Sunrise FS	Chandlerville	Cass	Industry	Yes	No	No	grain	40.04878998	-90.15281677
68	Western Grain Marketing	Tallula	Menard	Industry	Yes	No	No	grain	39.94320679	-89.93730927
69	Precision Tank	Athens	Menard	Industry	Yes	No	No	steel tanks (for ag & chemicals)	40.00292206	-89.7098999
70	Hanson Aggregates	Athens	Menard	Industry	Yes	No	No	aggregates	40.00509262	-89.71025848
71	RCM Co-Op	Athens	Menard	Industry	Yes	Potential	No	grain	40.00761795	-89.68675232
72	Meteer Manufacturing	Athens	Menard	Industry	Yes	Potential	No	ag equipment (steel)	40.00379181	-89.6949234
73	Growmark	Athens	Menard	Dist_Center	Yes	No	No	fertilizer	40.02424622	-89.7208252
74	Prairieland FS	Athens	Menard	Dist_Center	Yes	No	No	seed & fertilizer	40.03440857	-89.72373199
75	RCM Co-Op	Sweet Water	Menard	Industry	Yes	Potential	No	grain	40.05199814	-89.67729187
76	Lincoln Land FS	Atterberry	Menard	Industry	Yes	Yes	No	grain	40.06049728	-89.92418671
77	Farmers Grain & Coal	Greenview	Menard	Industry	Yes	No	No	grain	40.08581924	-89.73978424
78	Brandt	Greenview	Menard	Dist_Center	Yes	No	No	seed & fertilizer	40.08776474	-89.73728943
79	Brandt	Oakford	Menard	Dist_Center	Yes	Potential	No	seed & fertilizer	40.10585022	-89.96393585
80	Fusion Tech	Raritan	Warren	Industry	Yes	No	No	food processing equipment manufacturer	40.6638031	-90.7478714
81	West Central FS	Roseville	Warren	Dist_Center	Yes	No	No	seed & fertilizer	40.7430687	-90.61632538
82	Farmers Grain	Roseville	Warren	Industry	Yes	No	No	grain	40.73021317	-90.6603775
83	Earlybird Nutrition	Roseville	Warren	Dist_Center	Yes	No	No	seed & fertilizer	40.72921371	-90.6599884
84	Liqui-Grow	Roseville	Warren	Dist_Center	Yes	No	No	fertilizer	40.73332977	-90.69381714
85	Valley Quarry	St. Augustine	Warren	Industry	Yes	No	No	aggregates	40.74451447	-90.4546814
86	Berwick Grain	Berwick	Warren	Industry	Yes	No	No	grain	40.79943848	-90.54421997
87	CGB	Larchland	Warren	Industry	Yes	No	No	grain	40.82091522	-90.65675354
88	West Central FS	Monmouth	Warren	Dist_Center	Yes	Potential	No	seed & fertilizer	40.85341263	-90.61631775
89	Cameron Grain	Cameron	Warren	Industry	Yes	No	No	grain	40.8839798	-90.51305389
90	Youngquist Ag	Cameron	Warren	Industry	Yes	No	No	grain, seed, & fertilizer	40.90415573	-90.52996063
91	Cameron Grain	Galesburg	Warren	Industry	Yes	No	No	grain	40.94684219	-90.4585495
92	Heat & Control	Galesburg	Warren	Industry	Yes	No	No	processing equipment manufacturer (steel)	40.94653702	-90.45618439
93	Prairieland FS	Murrayville	Morgan	Industry	Yes	Potential	No	grain	39.58281326	-90.2522583
94	Whalen Trucking	Waverly	Morgan	Carrier	Yes	No	No	trucking company	39.59510422	-89.94966125
95	Prairieland FS	Murrayville	Morgan	Dist_Center	Yes	Potential	No	seed & fertilizer	39.60222626	-90.22808075
96	Franklin Elevator	Franklin	Morgan	Industry	Yes	Potential	No	grain	39.61838531	-90.04560852
97	Prairieland FS	Franklin	Morgan	Dist_Center	Yes	Potential	No	seed & fertilizer	39.60504913	-90.0317688
98	Brandt	Franklin	Morgan	Dist_Center	Yes	No	No	seed & fertilizer	39.62876892	-90.06333923
99	Rees Farmers	Franklin	Morgan	Industry	Yes	Potential	No	grain	39.63417816	-90.09424591
100	Bartlett	Jacksonville	Morgan	Industry	Yes	Yes	No	grain (with rail loop)	39.6924324	-90.22291565
101	Reynolds	Jacksonville	Morgan	Industry	Yes	Yes	No	various consumer products	39.71712494	-90.21858215
102	Ameren	Jacksonville	Morgan	Dist_Center	Yes	Potential	No	storage/distribution of power-related equipment	39.72161102	-90.20232391
103	ILMO Products	Jacksonville	Morgan	Industry	Yes	No	No	medical & industrial gases	39.72080612	-90.17498016
104	Landes Trucking	Jacksonville	Morgan	Carrier	Yes	No	No	trucking company	39.71844482	-90.175354
105	Franklin Elevator	Orleans	Morgan	Industry	Yes	Potential	No	grain	39.72441864	-90.07853699
106	Pactiv	Jacksonville	Morgan	Industry	Yes	Potential	No	food product packaging	39.72511673	-90.18389893
107	Reynolds	Jacksonville	Morgan	Industry	Yes	Yes	No	various consumer products	39.72547531	-90.18769836
108	Jacksonville Iron	Jacksonville	Morgan	Industry	Yes	Yes	No	scrap metal	39.73752213	-90.22010803

ID	Name	City	County	Type	Truck	Rail	Barge	Commodities	Latitude	Longitude
109	Nestle	Jacksonville	Morgan	Industry	Yes	Yes	No	various food products	39.74966812	-90.26763153
110	Western Grain Marketing	Chapin	Morgan	Industry	Yes	Potential	No	grain	39.7669487	-90.39890289
111	PrairieLand FS	Bethel	Morgan	Dist_Center	Yes	No	No	seed & fertilizer	39.77414322	-90.42243195
112	Prentice Farmers Elevator	Strawn Crossing	Morgan	Industry	Yes	No	No	grain	39.78615189	-90.15036774
113	Crop Production Services	Sinclair	Morgan	Dist_Center	Yes	No	No	seed & fertilizer	39.80273056	-90.1212616
114	Trammo	Meredosia	Morgan	Dist_Center	Yes	Potential	No	anhydrous ammonia (likely)	39.80541229	-90.56575775
115	Brown Pike County	Meredosia	Morgan	Industry	Yes	Yes	No	plastic fabrication	39.81348419	-90.56710815
116	Helena Chemical	Meredosia	Morgan	Dist_Center	Yes	Yes	No	seed & fertilizer	39.81097794	-90.56214905
117	Cargill	Meredosia	Morgan	Terminal	Yes	No	Yes	grain	39.83015823	-90.56246948
118	Lincoln Land FS	Prentice	Morgan	Dist_Center	Yes	No	No	seed & fertilizer	39.85732269	-90.04719543
119	Lincoln Land FS	Prentice	Morgan	Industry	Yes	No	No	grain	39.85858154	-90.04413605
120	Burrus	Arenzville	Morgan	Industry	Yes	No	No	seed	39.86558533	-90.45230103
121	Two Rivers FS	Astoria	Fulton	Dist_Center	Yes	No	No	seed & fertilizer	40.22463608	-90.36022949
122	Otter Creek Sand & Gravel	Enion	Fulton	Industry	Yes	No	No	aggregates	40.25107956	-90.15576172
123	Vermont Foundry	Vermont	Fulton	Industry	Yes	Potential	No	metals (brass & bronze castings)	40.3032608	-90.42690277
124	Fulton FS	Lewistown	Fulton	Dist_Center	Yes	No	No	seed & fertilizer	40.37875748	-90.16368866
125	Nutrien Ag Solutions	Lewistown	Fulton	Dist_Center	Yes	No	No	seed & fertilizer	40.38128281	-90.15742493
126	Ag-Land FS	Dunfermline	Fulton	Industry	Yes	Yes	No	grain	40.50124359	-90.00629425
127	Hitchcock Scrap	Canton	Fulton	Industry	Yes	Potential	No	scrap metal	40.51568604	-90.02836609
128	Western Grain Marketing	Fiatt	Fulton	Industry	Yes	No	No	grain	40.5598526	-90.18002319
129	Corsaw Hardwood Lumber	Blyton	Fulton	Industry	Yes	No	No	lumber mill & sales	40.56711578	-90.27547455
130	West Central FS	Ellisville	Fulton	Dist_Center	Yes	No	No	seed & fertilizer	40.62694168	-90.33880615
131	Western Grain Marketing	Fairview	Fulton	Industry	Yes	No	No	grain	40.63393402	-90.17712402
132	Lane Transfer	Farmington	Fulton	Carrier	Yes	No	No	trucking company	40.70606995	-90.00818634
133	Western Grain Marketing	Rapatee	Knox	Industry	Yes	No	No	grain	40.71347046	-90.15856934
134	Gro Alliance	Lake Fork	Logan	Industry	Yes	No	No	seed	39.95274734	-89.31194305
135	Lake Fork Fertilizer	Lake Fork	Logan	Dist_Center	Yes	Yes	No	fertilizer	39.96799088	-89.35703278
136	Elkhart Grain	Lake Fork	Logan	Industry	Yes	Potential	No	grain	39.97050858	-89.35077667
137	Ag-Land FS	Mt. Pulaski	Logan	Dist_Center	Yes	Potential	No	seed & fertilizer	40.01460266	-89.26403046
138	Herrin	Mt. Pulaski	Logan	Dist_Center	Yes	Yes	No	fertilizer	40.01808167	-89.29476166
139	Inland Tool	Mt. Pulaski	Logan	Industry	Yes	No	No	metal stamping & fabrication	40.01708221	-89.27946472
140	Elkhart Grain	Mt. Pulaski	Logan	Industry	Yes	Potential	No	grain	40.00823212	-89.29092407
141	Elkhart Grain	Mt. Pulaski	Logan	Industry	Yes	Potential	No	grain	40.00521851	-89.28585052
142	ICG Illinois	Elkhart	Logan	Industry	Yes	No	No	coal mine	40.0042305	-89.45043182
143	Elkhart Fertilizer Service	Elkhart	Logan	Dist_Center	Yes	Potential	No	fertilizer	40.00444412	-89.49855804
144	aNH3	Elkhart	Logan	Industry	Yes	No	No	anhydrous ammonia application equipment	40.02099609	-89.50083923
145	Davis Brothers	Elkhart	Logan	Carrier	Yes	No	No	trucking company	40.0229454	-89.48368073
146	Elkhart Grain	Elkhart	Logan	Industry	Yes	Yes	No	grain	40.02326584	-89.48150635
147	Elkhart Grain	Broadwell	Logan	Industry	Yes	Potential	No	grain	40.06579208	-89.44432831
148	Farmers Grain	Chestnut	Logan	Industry	Yes	Yes	No	grain	40.0521698	-89.18592072
149	Beason Ag Center	Beason	Logan	Dist_Center	Yes	No	No	seed & fertilizer	40.14346695	-89.18951416
150	East Lincoln Farmer's Grain	Beason	Logan	Industry	Yes	No	No	grain	40.14377975	-89.195755
151	East Lincoln Farmer's Grain	Lincoln	Logan	Industry	Yes	No	No	grain	40.14277267	-89.29040527
152	Remington Seeds	Lincoln	Logan	Industry	Yes	No	No	seed	40.14909744	-89.28862
153	Lincoln Ag Center	Lincoln	Logan	Dist_Center	Yes	No	No	seed & fertilizer	40.14955902	-89.3218689
154	Precision Products	Lincoln	Logan	Industry	Yes	Potential	No	lawn/garden equipment manufacturer	40.14169312	-89.34801483
155	Ag-Land FS	Lincoln	Logan	Dist_Center	Yes	Yes	No	seed & fertilizer	40.14845276	-89.35054779
156	Verallia	Lincoln	Logan	Industry	Yes	Yes	No	glass container manufacturer	40.15741348	-89.35375977
157	International Paper	Lincoln	Logan	Industry	Yes	Yes	No	paper products manufacturer	40.14606857	-89.38830566
158	Lincoln Transload & Processing	Lincoln	Logan	Industry	Yes	Yes	No	feed ingredient processor	40.14830399	-89.39833832
159	Sysco	Lincoln	Logan	Dist_Center	Yes	No	No	food distribution	40.14874649	-89.40773773
160	FedEx	Lincoln	Logan	Carrier	Yes	No	No	trucking company	40.1552124	-89.41596222
161	Brandt	Burton View	Logan	Industry	Yes	No	No	grain, seed, & fertilizer	40.1698494	-89.48686981
162	Burton View Co-Op	Burton View	Logan	Industry	Yes	No	No	grain	40.16947556	-89.48364258
163	Eaton	Lincoln	Logan	Industry	Yes	Potential	No	electrical equipment manufacturer	40.16758347	-89.37019348

ID	Name	City	County	Type	Truck	Rail	Barge	Commodities	Latitude	Longitude
164	Lincoln Iron & Metal	Lincoln	Logan	Industry	Yes	Potential	No	scrap metal	40.16054535	-89.34837341
165	Topflight Grain	Lincoln	Logan	Industry	Yes	Yes	No	grain	40.17983627	-89.32642365
166	Cresco Labs	Lincoln	Logan	Industry	Yes	No	No	cannabis products	40.18064117	-89.32300568
167	Ag-Land FS	New Holland	Logan	Dist_Center	Yes	No	No	seed & fertilizer	40.18079376	-89.56983948
168	Encompass Grain & Rail Co-Op	New Holland	Logan	Industry	Yes	No	No	grain	40.18346024	-89.58345032
169	Ag-Land FS	Hartsburg	Logan	Dist_Center	Yes	Potential	No	seed & fertilizer	40.24668884	-89.43787384
170	Hartsburg Grain	Hartsburg	Logan	Industry	Yes	Potential	No	grain	40.24800491	-89.43910217
171	Atlanta Ag Center	Atlanta	Logan	Dist_Center	Yes	No	No	seed & fertilizer	40.25271988	-89.21509552
172	Nutrien Ag Solutions	Atlanta	Logan	Dist_Center	Yes	Potential	No	seed & fertilizer	40.25857925	-89.23510742
173	Topflight Grain	Atlanta	Logan	Industry	Yes	Potential	No	grain	40.26246643	-89.22991943
174	Holland	Atlanta	Logan	Carrier	Yes	No	No	trucking company	40.26548386	-89.22561646
175	Sun Ag	Emden	Logan	Dist_Center	Yes	Potential	No	seed & fertilizer	40.3082428	-89.49388885
176	Grainland Co-Op	Emden	Logan	Industry	Yes	Yes	No	grain	40.30092621	-89.48531342
177	Fornoff Fertilizer Services	Kilbourne	Mason	Dist_Center	Yes	No	No	fertilizer	40.14517593	-90.01521301
178	Sunrise FS	Kilbourne	Mason	Dist_Center	Yes	No	No	seed & fertilizer	40.14887238	-90.087677
179	Darling Ingredients	Mason City	Mason	Industry	Yes	No	No	food/feed ingredients	40.19229507	-89.69775391
180	Sunrise FS	Mason City	Mason	Dist_Center	Yes	No	No	seed & fertilizer	40.20174408	-89.71879578
181	Encompass Grain & Rail Co-Op	Mason City	Mason	Industry	Yes	No	No	grain	40.19836426	-89.69551086
182	Bayer	Mason City	Mason	Industry	Yes	No	No	crop science facility	40.19926071	-89.67613983
183	Encompass Grain & Rail Co-Op	Teheran	Mason	Industry	Yes	No	No	grain	40.22394562	-89.7980423
184	Farmers Elevator Co.	Easton	Mason	Industry	Yes	No	No	grain	40.23197556	-89.84590912
185	Sunrise FS	Easton	Mason	Dist_Center	Yes	No	No	seed & fertilizer	40.23231125	-89.8553009
186	Farmers Elevator Co.	Easton	Mason	Industry	Yes	No	No	grain	40.24127197	-89.90245819
187	ADM	Havana	Mason	Industry	Yes	No	No	grain	40.25741196	-90.08366394
188	Ameren	Meredosia	Morgan	Industry	Yes	Yes	Yes	power plant (coal)	39.82276917	-90.5688858
189	Dynegy	Havana	Mason	Industry	Yes	Yes	Yes	power plant (coal)	40.27903748	-90.0813446
190	Dynegy	Canton	Fulton	Industry	Yes	Yes	No	power plant (coal)	40.46676254	-89.98480988
191	Encompass Grain & Rail Co-Op	San Jose	Mason	Industry	Yes	Yes	No	grain	40.30137634	-89.65047455
192	ADM	Havana	Mason	Terminal	Yes	No	Yes	grain & fertilizer	40.2894516	-90.07260895
193	Sunrise FS	Havana	Mason	Terminal	Yes	No	Yes	grain & fertilizer	40.28637314	-90.07551575
194	Metal Culverts	Havana	Mason	Industry	Yes	Potential	No	corrugated metal pipes	40.28450394	-90.04919434
195	ADM	Havana	Mason	Terminal	Yes	No	Yes	grain	40.29533386	-90.06738281
196	Cargill	Havana	Mason	Terminal	Yes	No	Yes	grain	40.29710388	-90.06684113
197	Cargill	Havana	Mason	Terminal	Yes	No	Yes	grain	40.29829407	-90.06665802
198	Hawkins	Havana	Mason	Dist_Center	Yes	No	No	chemicals	40.29433441	-90.04091644
199	SCH Terminal	Havana	Mason	Terminal	Yes	Yes	Yes	coal transloading	40.3126564	-90.06454468
200	Weaver Bulk	Forest City	Mason	Dist_Center	Yes	No	No	seed & fertilizer	40.34233093	-89.83010101
201	Rickett Grain	Forest City	Mason	Industry	Yes	Potential	No	grain	40.37016296	-89.82782745
202	Sunrise FS	Manito	Mason	Dist_Center	Yes	No	No	seed & fertilizer	40.40631866	-89.7722702
203	Rickett Grain	Manito	Mason	Industry	Yes	Potential	No	grain	40.41960526	-89.78489685
204	Western Grain Marketing	London Mills	Knox	Industry	Yes	No	No	grain	40.75168991	-90.31475067
205	Graves Milling	Yates City	Knox	Industry	Yes	No	No	grain	40.77825165	-90.01638031
206	Nutrien Ag Solutions	Yates City	Knox	Dist_Center	Yes	Potential	No	seed & fertilizer	40.78499603	-90.0870285
207	Grain Store Elevators	Abingdon	Knox	Industry	Yes	No	No	grain	40.80821228	-90.38687897
208	Riverland FS	Maquon	Knox	Dist_Center	Yes	Yes	No	seed & fertilizer	40.80020142	-90.15535736
209	West Central FS	Galesburg	Knox	Dist_Center	Yes	Potential	No	seed & fertilizer	40.90034103	-90.42486572
210	Koppers	Galesburg	Knox	Industry	Yes	Yes	No	railroad products (ties)	40.89816284	-90.39627838
211	BNSF	Galesburg	Knox	Carrier	Yes	Yes	No	rail yard	40.90203094	-90.39124298
212	Riverland FS	Williamsfield	Knox	Dist_Center	Yes	Yes	No	seed & fertilizer	40.92033005	-90.0134201
213	Ag-Land FS	Williamsfield	Knox	Industry	Yes	Potential	No	grain	40.92281342	-90.01953888
214	Western Grain Marketing	Knoxville	Knox	Industry	Yes	Potential	No	grain	40.91111755	-90.28145599
215	Gates	Galesburg	Knox	Industry	Yes	Yes	No	industrial belts & hoses (rubber)	40.92125702	-90.32170105
216	Olson Packaging	Galesburg	Knox	Dist_Center	Yes	Potential	No	warehousing & packaging	40.92434692	-90.3250351
217	Nutrien Ag Solutions	Galesburg	Knox	Dist_Center	Yes	No	No	seed & fertilizer	40.91762543	-90.34481049
218	BNSF	Galesburg	Knox	Carrier	Yes	Yes	No	rail yard	40.92120743	-90.38050079

ID	Name	City	County	Type	Truck	Rail	Barge	Commodities	Latitude	Longitude
219	Blick Art Materials	Galesburg	Knox	Dist_Center	Yes	Potential	No	art supplies	40.93383789	-90.40532684
220	Olson Packaging	Galesburg	Knox	Dist_Center	Yes	Yes	No	warehousing & packaging	40.93505478	-90.40445709
221	WestRock	Galesburg	Knox	Industry	Yes	Yes	No	packaging	40.93849182	-90.40122986
222	Midstate Manufacturing	Galesburg	Knox	Industry	Yes	Potential	No	metal components (steel)	40.93576431	-90.38246155
223	Euclid Beverage	Galesburg	Knox	Dist_Center	Yes	Potential	No	beverage distributor	40.92638397	-90.38996887
224	Derby Supply Chain Solutions	Galesburg	Knox	Dist_Center	Yes	Potential	No	3PL; assembly, packaging, warehousing	40.92684174	-90.38806152
225	Blick Art Materials	Galesburg	Knox	Dist_Center	Yes	No	No	art supplies	40.92470169	-90.38538361
226	DCM Transport	Galesburg	Knox	Carrier	Yes	No	No	trucking company	40.92623138	-90.38230896
227	General Mills	Galesburg	Knox	Dist_Center	Yes	No	No	food products packaging & distribution	40.92892456	-90.38228607
228	Bertis Carlson Trucking	Galesburg	Knox	Carrier	Yes	No	No	trucking company	40.92961121	-90.38492584
229	Innovative Production	Galesburg	Knox	Industry	Yes	Potential	No	food products	40.93130875	-90.38188171
230	Progress Rail Recycling	Galesburg	Knox	Industry	Yes	Yes	No	scrap metal	40.92889023	-90.33098602
231	Gavilon	Galesburg	Knox	Industry	Yes	Potential	No	grain	40.94825745	-90.37832642
232	G&M Distributors	Galesburg	Knox	Dist_Center	Yes	No	No	food & beverage distribution	40.95013809	-90.40378571
233	Ameren	Galesburg	Knox	Dist_Center	Yes	Potential	No	storage/distribution of power-related equipment	40.97762299	-90.326828
234	Blick Art Materials	Galesburg	Knox	Dist_Center	Yes	Potential	No	art supplies	40.91957855	-90.31004333
235	National Coatings	Galesburg	Knox	Industry	Yes	Potential	No	surface coatings	40.92694473	-90.32611084
236	Nutrien Ag Solutions	Galesburg	Knox	Dist_Center	Yes	No	No	seed & fertilizer	40.91936111	-90.39949799
237	Bradley Smoker USA	Galesburg	Knox	Industry	Yes	No	No	meat smoker manufacturer (steel)	40.92501831	-90.3813324
238	ILPEA Industries	Galesburg	Knox	Industry	Yes	Potential	No	rubber & plastic component manufacturer	40.94051361	-90.40164948
239	Naeir	Galesburg	Knox	Dist_Center	Yes	Potential	No	various product distribution to charities	40.9392395	-90.39652252
240	ADM	Galesburg	Knox	Industry	Yes	Yes	No	grain	40.93459702	-90.38233185
246	Chatham Plastics	Chatham	Sangamon	Industry	Yes	No	No	plastics manufacturer	39.66424561	-89.7060318
247	Henry Technologies	Chatham	Sangamon	Industry	Yes	Potential	No	component/fitting manufacturer (metals)	39.66559982	-89.70513153
248	Lick Elevator	Chatham	Sangamon	Industry	Yes	No	No	grain	39.6829071	-89.76361847
249	Brandt	New Berlin	Sangamon	Industry	Yes	Yes	No	grain, seed, & fertilizer	39.72475052	-89.96243286
250	PrairieLand FS	New Berlin	Sangamon	Dist_Center	Yes	Yes	No	seed & fertilizer	39.72471619	-89.95709229
251	Farmers Grain	New Berlin	Sangamon	Industry	Yes	Potential	No	grain	39.72369766	-89.91583252
252	Farmers Grain	New Berlin	Sangamon	Industry	Yes	Potential	No	grain	39.72372055	-89.91265869
253	Keurig Dr. Pepper	Springfield	Sangamon	Dist_Center	Yes	No	No	beverage distributor	39.7328949	-89.63140869
254	Robert Chick Fritz	Springfield	Sangamon	Dist_Center	Yes	No	No	beverage distributor	39.74103165	-89.63877869
255	AT&T	Springfield	Sangamon	Dist_Center	Yes	No	No	telecommunications equipment	39.74221039	-89.63139343
256	Frito-Lay	Springfield	Sangamon	Dist_Center	Yes	Potential	No	snack foods	39.74788666	-89.74777222
257	Simplex	Springfield	Sangamon	Industry	Yes	No	No	power generation equipment manufacturer	39.74946213	-89.74918365
258	Mel-O-Cream Donuts	Springfield	Sangamon	Industry	Yes	Potential	No	donut maker & distributor	39.74723053	-89.75151062
259	American Metals Supply	Springfield	Sangamon	Dist_Center	Yes	No	No	metal components distributor	39.75082779	-89.75797272
260	MJ Kellner Foodservice	Springfield	Sangamon	Dist_Center	Yes	No	No	food product distributor	39.74952316	-89.75924683
261	ADM	Curran	Sangamon	Industry	Yes	Yes	No	grain	39.7377739	-89.7598877
262	Brandt	Curran	Sangamon	Dist_Center	Yes	Potential	No	seed & fertilizer	39.74253464	-89.76422882
263	WinField United	Curran	Sangamon	Dist_Center	Yes	No	No	seed & fertilizer	39.74119949	-89.76386261
264	Contech Engineered Solutions	Springfield	Sangamon	Industry	Yes	Yes	No	construction materials (steel pipes)	39.75635147	-89.63835907
265	Bunn	Springfield	Sangamon	Industry	No	Potential	No	coffee maker manufacturer	39.75621414	-89.63471222
266	CWLP	Springfield	Sangamon	Industry	Yes	No	No	power plant (coal)	39.75492096	-89.60249329
267	Buckhart Sand & Gravel	Springfield	Sangamon	Industry	Yes	No	No	aggregates	39.75841904	-89.4546814
268	Vulcan Materials	Springfield	Sangamon	Industry	Yes	No	No	aggregates	39.78029633	-89.49871826
269	TeeJet Technologies	Springfield	Sangamon	Industry	Yes	No	No	liquid fertilizer spray nozzles	39.78427124	-89.61087036
270	Nudo Products	Springfield	Sangamon	Industry	Yes	No	No	various building materials	39.7859726	-89.61795807
271	Richardson Manufacturing	Springfield	Sangamon	Industry	Yes	No	No	large component machining (steel)	39.78790283	-89.69309998
272	Mervis	Springfield	Sangamon	Industry	Yes	Potential	No	scrap metal	39.78968811	-89.64319611
273	NS	Springfield	Sangamon	Carrier	Yes	Yes	No	rail yard	39.79108429	-89.64248657
274	Illinois Brick	Springfield	Sangamon	Industry	Yes	Potential	No	brick manufacturer	39.7935257	-89.64319611
275	Pepsi-Cola	Springfield	Sangamon	Dist_Center	Yes	No	No	beverage distributor	39.79185104	-89.61123657
276	Ben Tire	Springfield	Sangamon	Dist_Center	Yes	No	No	tire distributor	39.79262543	-89.60839081
277	Pryco	Mechanicsburg	Sangamon	Industry	Yes	No	No	fuel systems manufacturer	39.8120079	-89.39369202
278	RCM Co-Op	Mechanicsburg	Sangamon	Industry	Yes	No	No	grain	39.81228638	-89.39266968

ID	Name	City	County	Type	Truck	Rail	Barge	Commodities	Latitude	Longitude
279	Whalen Trucking	Springfield	Sangamon	Carrier	Yes	No	No	trucking company	39.81220627	-89.55050659
280	Illinois & Midland RR	Springfield	Sangamon	Carrier	Yes	Yes	No	rail yard	39.8135643	-89.63217163
281	Ameren	Springfield	Sangamon	Dist_Center	Yes	No	No	storage/distribution of power equipment	39.81125641	-89.66998291
282	Bradfordton Co-Op	Bradfordton	Sangamon	Industry	Yes	No	No	grain	39.82301712	-89.73881531
283	RCM Co-Op	Pleasant Plains	Sangamon	Industry	Yes	No	No	grain	39.846035	-89.85844421
284	Ley Metals Recycling	Springfield	Sangamon	Industry	Yes	Potential	No	scrap metal	39.84106064	-89.63108826
285	Beelman	Springfield	Sangamon	Carrier	Yes	No	No	trucking company	39.82885361	-89.5903244
286	R+L Carriers	Springfield	Sangamon	Carrier	Yes	No	No	trucking company	39.83347321	-89.58960724
287	Martin Transportation	Springfield	Sangamon	Carrier	Yes	No	No	trucking company	39.83494186	-89.58737183
288	Prime Panels	Springfield	Sangamon	Industry	Yes	No	No	wall, ceiling, & sign panels	39.83847427	-89.58369446
289	Coca-Cola Vending	Springfield	Sangamon	Dist_Center	Yes	No	No	beverage distributor	39.83265686	-89.58312225
290	LS Building Products	Springfield	Sangamon	Dist_Center	Yes	No	No	residential construction products distributor	39.83003998	-89.58908081
291	SIC Recycling	Riverton	Sangamon	Industry	Yes	No	No	scrap metal	39.8333168	-89.51913452
292	XPO Logistics	Riverton	Sangamon	Carrier	Yes	No	No	trucking company	39.83647156	-89.51650238
293	Herrin	Buffalo	Sangamon	Dist_Center	Yes	Yes	No	fertilizer	39.85195541	-89.38755035
294	Rosen's Inc.	Buffalo	Sangamon	Dist_Center	Yes	No	No	seed	39.85174942	-89.38529968
295	RCM Co-Op	Dawson	Sangamon	Industry	Yes	Potential	No	grain	39.85309219	-89.462677
296	PrairieLand FS	Riverton	Sangamon	Dist_Center	Yes	No	No	seed & fertilizer	39.8465538	-89.49186707
297	EL Pruitt	Bissell	Sangamon	Industry	Yes	No	No	HVAC piping & plumbing (steel)	39.8452301	-89.58153534
298	FedEx	Bissell	Sangamon	Carrier	Yes	No	No	trucking company	39.84257126	-89.59775543
299	County Materials	Springfield	Sangamon	Industry	Yes	No	No	concrete products	39.84777832	-89.60549927
300	ASI Metal Fabrication	Springfield	Sangamon	Industry	Yes	No	No	metal fabrication	39.84807968	-89.60825348
301	Certified Tank Manufacturing	Springfield	Sangamon	Industry	Yes	Potential	No	metal tank manufacturer	39.85029221	-89.61788177
302	Solomon Colors	Springfield	Sangamon	Industry	Yes	Potential	No	architectural concrete products	39.85766983	-89.63569641
303	RCM Co-Op	Pleasant Plains	Sangamon	Industry	Yes	No	No	grain	39.87554932	-89.92341614
304	Whalen Trucking	Pleasant Plains	Sangamon	Carrier	Yes	No	No	trucking company	39.87714767	-89.92430878
305	Brandt	Pleasant Plains	Sangamon	Dist_Center	Yes	No	No	seed & fertilizer	39.87803268	-89.92575836
306	RCM Co-Op	Spaulding	Sangamon	Industry	Yes	No	No	grain	39.8976593	-89.4979248
307	Donley Trucking	Williamsville	Sangamon	Carrier	Yes	No	No	trucking company	39.9316864	-89.57188416
308	RCM Co-Op	Williamsville	Sangamon	Industry	Yes	Yes	No	grain	39.9525795	-89.55015564
309	Brandt	Williamsville	Sangamon	Dist_Center	Yes	Potential	No	seed & fertilizer	39.95802689	-89.54632568
310	RCM Co-Op	Athens	Sangamon	Industry	Yes	Potential	No	grain	39.96235657	-89.69631195
311	Kwik-Wall	Springfield	Sangamon	Industry	Yes	No	No	moveable walls/partitions manufacturer	39.7321167	-89.63153076
312	Southern Glazer's Wine & Spirits	Springfield	Sangamon	Dist_Center	Yes	Potential	No	beverage distributor	39.73134613	-89.63072205
313	Cavalier Cartage	Springfield	Sangamon	Carrier	Yes	No	No	trucking company	39.73087692	-89.63428497
314	Ace Sign	Springfield	Sangamon	Industry	Yes	Potential	No	sign manufacturer	39.77218628	-89.65345764
315	Charles C Thomas Publisher	Springfield	Sangamon	Industry	Yes	Potential	No	book publisher	39.77145004	-89.65373993
316	Schwan's	Bissell	Sangamon	Dist_Center	Yes	No	No	food product distributor	39.83607483	-89.58332062
317	Grainland Co-Op	Armington	Tazewell	Industry	Yes	No	No	grain	40.33888245	-89.30609131
318	Caterpillar	Delavan	Tazewell	Dist_Center	Yes	No	No	parts distribution center	40.35216522	-89.5637207
319	Encompass Grain & Rail Co-Op	Delavan	Tazewell	Industry	Yes	Yes	No	grain	40.37097931	-89.54426575
320	Sommer Seed	Delavan	Tazewell	Dist_Center	Yes	No	No	seed	40.36564636	-89.45413208
321	HG&N Fertilizers	Delavan	Tazewell	Dist_Center	Yes	No	No	fertilizer	40.38166428	-89.45084381
322	Revolution	Delavan	Tazewell	Industry	Yes	No	No	cannabis products	40.37886047	-89.5251236
323	Ag-Land FS	Green Valley	Tazewell	Industry	Yes	Potential	No	grain	40.40666199	-89.63745117
324	Ag-Land FS	Green Valley	Tazewell	Dist_Center	Yes	Potential	No	seed & fertilizer	40.40667343	-89.63442993
325	Encompass Grain & Rail Co-Op	Delavan	Tazewell	Industry	Yes	No	No	grain	40.39515686	-89.4756012
326	Ragland Buildings	Hopedale	Tazewell	Industry	Yes	No	No	metal building manufacturer (steel)	40.42518997	-89.43797302
327	Tremont Co-Op Grain	Delavan	Tazewell	Industry	Yes	No	No	grain	40.41036987	-89.53093719
328	Dabney Trucking	Minier	Tazewell	Carrier	Yes	No	No	trucking company	40.44159317	-89.34700775
329	Grainland Co-Op	Minier	Tazewell	Industry	Yes	No	No	grain, seed, & fertilizer	40.4330368	-89.31680298
330	Precision Planting	Tremont	Tazewell	Industry	Yes	No	No	ag equipment accessory manufacturer	40.47988892	-89.48699951
331	Lowery Sand & Gravel	Tremont	Tazewell	Industry	Yes	No	No	aggregates	40.48040009	-89.43444061
332	UP	South Pekin	Tazewell	Carrier	Yes	Yes	No	rail maintenance yard	40.49705887	-89.65119171
333	Midstate Ag	South Pekin	Tazewell	Industry	Yes	No	No	grain	40.470047	-89.60731506

ID	Name	City	County	Type	Truck	Rail	Barge	Commodities	Latitude	Longitude
334	Tremont Co-Op Grain	Pekin	Tazewell	Industry	Yes	Potential	No	grain	40.5256691	-89.69387817
335	Superior Industries	Pekin	Tazewell	Industry	Yes	No	No	processing plants & portable conveyors (steel)	40.52876663	-89.69376373
336	FLSmith	Pekin	Tazewell	Industry	Yes	No	No	equipment for mining & cement industries (steel)	40.53105545	-89.69431305
337	RL Lewis Industries	Pekin	Tazewell	Industry	Yes	No	No	machining & fabrication (steel)	40.52723694	-89.60739899
338	Horton Trucking	Tremont	Tazewell	Carrier	Yes	No	No	trucking company	40.53003311	-89.5052948
339	Tremont Co-Op Grain	Tremont	Tazewell	Industry	Yes	No	No	grain	40.52829361	-89.4932251
340	Ag-Land FS	Tremont	Tazewell	Dist_Center	Yes	No	No	seed & fertilizer	40.52639771	-89.47075653
341	Tremont Co-Op Grain	Tremont	Tazewell	Industry	Yes	No	No	grain	40.5353775	-89.47397614
342	Mackinaw Grain	Mackinaw	Tazewell	Industry	Yes	No	No	grain	40.53022003	-89.35855103
343	US Conveyor Technologies	Mackinaw	Tazewell	Industry	Yes	No	No	conveyor manufacturer (steel)	40.52851486	-89.36672211
344	Syngenta Seeds	Pekin	Tazewell	Industry	Yes	No	No	seed	40.53987503	-89.58024597
345	Hanna Steel	Pekin	Tazewell	Industry	Yes	Yes	No	steel coil coatings	40.54484177	-89.65816498
346	WheelWorx	Pekin	Tazewell	Industry	No	No	No	railcar wheel servicing	40.5447197	-89.6626358
347	Winpak	Pekin	Tazewell	Industry	Yes	No	No	heat-seal packaging manufacturer	40.5465889	-89.65999603
348	Amerhart	Pekin	Tazewell	Industry	Yes	Yes	No	building products manufacturer	40.54772186	-89.65770721
349	KMI	Pekin	Tazewell	Dist_Center	Yes	Potential	No	warehousing & distribution	40.55226898	-89.65626526
350	Tazewell Machine Works	Pekin	Tazewell	Industry	Yes	No	No	aluminum castings	40.54394531	-89.66582489
351	American Milling	Pekin	Tazewell	Industry	Yes	Yes	Yes	grain	40.55086899	-89.66880798
352	Excalibur Seasoning	Pekin	Tazewell	Industry	Yes	No	No	food seasoning manufacturer	40.54877472	-89.65901184
353	PAL Health Technologies	Pekin	Tazewell	Industry	Yes	No	No	healthcare device manufacturer	40.54847336	-89.66060638
354	NRG	Pekin	Tazewell	Industry	Yes	Yes	Potential	power plant (coal)	40.54074097	-89.68012238
355	Pekin Sand & Gravel	Pekin	Tazewell	Industry	Yes	Potential	No	aggregates	40.53661728	-89.69071198
356	Ox Industries	Pekin	Tazewell	Industry	Yes	Potential	No	paperboard manufacturer	40.55252075	-89.66545105
357	Alto ICP	Pekin	Tazewell	Industry	Yes	Yes	Yes	corn-based ethanol production	40.55394745	-89.67044067
358	Continental Carbonic Products	Pekin	Tazewell	Industry	Yes	No	No	dry ice manufacturer	40.55381393	-89.66672516
359	Alto Ingredients	Pekin	Tazewell	Industry	Yes	Yes	No	corn-based alcohol products	40.55541992	-89.66345978
360	Messer	Pekin	Tazewell	Industry	Yes	Yes	No	industrial gases	40.55571747	-89.66617584
361	Praxair	Pekin	Tazewell	Industry	Yes	Yes	No	industrial gases	40.55662537	-89.66679382
362	CHS	Pekin	Tazewell	Terminal	Yes	Yes	Yes	grain	40.56318283	-89.66046906
363	Sun Ag	Morton	Tazewell	Dist_Center	Yes	No	No	seed & fertilizer	40.55488968	-89.46940613
364	Lowery Sand & Gravel	Mackinaw	Tazewell	Industry	Yes	No	No	aggregates	40.55547333	-89.34446716
365	Schwan's	Pekin	Tazewell	Dist_Center	Yes	No	No	food product distributor	40.59819412	-89.63234711
366	Illinois Oil Marketing Equipment	Pekin	Tazewell	Industry	Yes	No	No	petroleum equipment manufacturer (steel)	40.59753036	-89.63335419
367	Multax	Morton	Tazewell	Industry	Yes	No	No	parts machining (steel)	40.6015358	-89.47583008
368	YRC Freight	Morton	Tazewell	Carrier	Yes	No	No	trucking company	40.60420227	-89.48402405
369	Precision Planting	Morton	Tazewell	Industry	Yes	No	No	ag equipment accessory manufacturer	40.60421753	-89.48608398
370	Marion Manufacturing	Morton	Tazewell	Industry	Yes	No	No	parts machining (steel)	40.60141754	-89.48861694
371	Air-Land Transport Service	Morton	Tazewell	Carrier	Yes	No	No	trucking company	40.60338974	-89.4872818
372	4B Components	Morton	Tazewell	Industry	Yes	No	No	material handling equipment components	40.60291672	-89.48368835
373	Caterpillar	Morton	Tazewell	Dist_Center	Yes	Potential	No	parts/components distribution	40.61905289	-89.45735168
374	Nestle	Morton	Tazewell	Industry	Yes	Potential	No	food product processing	40.61413574	-89.46347046
375	KR Packaging	Morton	Tazewell	Industry	Yes	Potential	No	packaging manufacturer	40.61191177	-89.46605682
376	Morton Buildings	Morton	Tazewell	Industry	Yes	Potential	No	metal building manufacturer (steel)	40.61081696	-89.46616364
377	Fort Transfer	Morton	Tazewell	Carrier	Yes	No	No	trucking company	40.61381531	-89.46935272
379	360 Yield Center	Morton	Tazewell	Industry	Yes	No	No	ag equipment accessory manufacturer	40.61558914	-89.47145844
380	Morton Industries	Morton	Tazewell	Industry	Yes	Potential	No	tube & sheet metal fabrication (steel)	40.6159668	-89.47464752
381	Pro-Fab	Morton	Tazewell	Industry	Yes	Potential	No	process equipment & pressure vessels fabricator (steel)	40.61878586	-89.47602081
382	Matcor Metal Fabrication	Morton	Tazewell	Industry	Yes	Potential	No	metal fabrication (steel)	40.60958099	-89.47099304
383	American Tire Distributors	Morton	Tazewell	Dist_Center	Yes	No	No	tire & wheel distribution	40.61211777	-89.48441315
384	Morton Buildings	Morton	Tazewell	Industry	Yes	Yes	No	metal building manufacturer	40.61167145	-89.48141479
385	Morton Buildings	Morton	Tazewell	Industry	Yes	No	No	metal building manufacturer	40.61343384	-89.48164368
386	Sandridge Food	Morton	Tazewell	Dist_Center	Yes	No	No	food product distribution	40.60909271	-89.48465729
387	Pepsi Beverages	Morton	Tazewell	Dist_Center	Yes	Potential	No	beverage distributor	40.6062355	-89.48509216
388	Matcor Metal Fabrication	Morton	Tazewell	Industry	Yes	Potential	No	metal fabrication (steel)	40.60621262	-89.48953247
391	Precision Planting	Morton	Tazewell	Industry	Yes	No	No	ag equipment accessory manufacturer	40.60557175	-89.48144531

ID	Name	City	County	Type	Truck	Rail	Barge	Commodities	Latitude	Longitude
392	Central Material Handling Systems	Groveland	Tazewell	Industry	Yes	No	No	material handling equipment manufacturer (steel)	40.6056633	-89.53512573
393	Gavilon	Marquette Heights	Tazewell	Dist_Center	Yes	Yes	No	fertilizer	40.6308136	-89.62186432
394	ADM	Marquette Heights	Tazewell	Terminal	Yes	Yes	Yes	grain	40.63733292	-89.61649323
396	Kuna Foodservice	Creve Coeur	Tazewell	Dist_Center	Yes	No	No	food product distribution	40.63063431	-89.5398941
397	Keen Trucking	Morton	Tazewell	Carrier	Yes	No	No	trucking company	40.62406158	-89.46958923
398	Risinger Brothers Transfer	Morton	Tazewell	Carrier	Yes	No	No	trucking company	40.62879562	-89.46860504
399	CRST International	Morton	Tazewell	Carrier	Yes	No	No	trucking company	40.63059616	-89.46664429
400	Yinlun TDI	Morton	Tazewell	Industry	Yes	No	No	vehicle heating/cooling components (steel)	40.62626648	-89.45618439
401	G&D Integrated	Morton	Tazewell	Industry	Yes	No	No	trucking, warehousing, & steel-related manufacturing	40.62322235	-89.45330811
402	Morton Industries	Morton	Tazewell	Industry	Yes	No	No	tube & sheet metal fabrication (steel)	40.62582397	-89.45387268
403	Parker	Morton	Tazewell	Industry	Yes	No	No	motion/control technology component manufacturer	40.62554932	-89.45175171
404	Veritiv	Morton	Tazewell	Dist_Center	Yes	No	No	packaging supplier	40.6278801	-89.45137787
405	Parker Fabrication	Morton	Tazewell	Industry	Yes	No	No	metal fabrication (steel)	40.62972641	-89.45292664
406	FedEx	Morton	Tazewell	Carrier	Yes	No	No	trucking company	40.63183212	-89.45424652
407	Bell Enterprises	Deer Creek	Tazewell	Industry	Yes	No	No	grain, seed, fertilizer, & trucking	40.6306572	-89.35946655
408	Titan Industries	Deer Creek	Tazewell	Industry	Yes	No	No	steel fabrication	40.62429047	-89.33193207
409	LS Building Products	East Peoria	Tazewell	Dist_Center	Yes	No	No	residential construction products distributor	40.6384201	-89.54288483
410	RJ Distributing	East Peoria	Tazewell	Dist_Center	Yes	No	No	beverage distributor	40.64422989	-89.54667664
411	Cope Plastics	East Peoria	Tazewell	Industry	Yes	No	No	plastics fabricator	40.64641953	-89.5508194
412	Walz Scale	East Peoria	Tazewell	Industry	Yes	No	No	scale manufacturer (steel)	40.64678192	-89.55128479
413	Central Illinois Freight Handling	Creve Coeur	Tazewell	Terminal	Yes	Yes	Yes	sheet pile dock	40.63936615	-89.61631775
414	Keen Transport	East Peoria	Tazewell	Carrier	Yes	Yes	No	heavy equipment carrier (transload facility)	40.6566124	-89.60044098
415	Tazewell & Peoria Railroad	East Peoria	Tazewell	Carrier	Yes	Yes	No	rail yard	40.66190338	-89.59306335
416	Caterpillar	East Peoria	Tazewell	Industry	Yes	Yes	No	heavy equipment manufacturer (steel)	40.66400909	-89.59783936
417	Caterpillar	East Peoria	Tazewell	Industry	Yes	Potential	No	heavy equipment manufacturer (steel)	40.6666069	-89.60301208
418	Caterpillar	East Peoria	Tazewell	Industry	Yes	Yes	No	heavy equipment manufacturer (steel)	40.67079544	-89.59737396
420	Caterpillar	East Peoria	Tazewell	Industry	Yes	Potential	No	heavy equipment manufacturer (steel)	40.67379761	-89.59212494
421	Caterpillar	East Peoria	Tazewell	Industry	Yes	Yes	Potential	heavy equipment manufacturer (steel)	40.67338562	-89.60057831
422	Caterpillar	East Peoria	Tazewell	Industry	Yes	No	No	heavy equipment manufacturer (steel)	40.67772293	-89.59081268
423	Caterpillar	East Peoria	Tazewell	Industry	Yes	No	No	heavy equipment manufacturer (steel)	40.6761055	-89.59632874
424	Hagerty Steel & Aluminum	East Peoria	Tazewell	Industry	Yes	No	No	metal fabricator (steel & aluminum)	40.67241287	-89.57276917
425	Cobalt Chains	East Peoria	Tazewell	Industry	Yes	No	No	industrial chain manufacturer (steel)	40.66806412	-89.54798889
426	Toledo, Peoria, & Western	East Peoria	Tazewell	Carrier	Yes	Yes	No	rail yard	40.66926193	-89.55051422
427	Supply Chain Services	East Peoria	Tazewell	Industry	Yes	Potential	No	barcode equipment manufacturer	40.67147446	-89.53994751
428	Jtec	East Peoria	Tazewell	Industry	Yes	No	No	industrial cart manufacturer (forklift alternative; steel)	40.67256165	-89.53821564
429	G&D Integrated	East Peoria	Tazewell	Industry	Yes	Potential	No	trucking, warehousing, & steel-related manufacturing	40.67271042	-89.53060913
430	Ameren	Morton	Tazewell	Dist_Center	Yes	No	No	storage/distribution of power-related equipment	40.65807343	-89.40340424
431	Federal Logistics	East Peoria	Tazewell	Dist_Center	Yes	No	No	warehousing/distribution	40.67425156	-89.5692749
432	United Facilities	East Peoria	Tazewell	Dist_Center	Yes	No	No	warehousing/distribution	40.67594528	-89.57423401
433	Dayton Freight	East Peoria	Tazewell	Carrier	Yes	No	No	trucking company	40.67542267	-89.57884216
434	UPS	East Peoria	Tazewell	Carrier	Yes	No	No	trucking company	40.67507553	-89.58072662
435	SC2	East Peoria	Tazewell	Dist_Center	Yes	No	No	3PL (trucking, warehousing, & distribution)	40.6775856	-89.58242035
436	Enercon	East Peoria	Tazewell	Industry	Yes	No	No	power-related equipment manufacturer (steel)	40.67303467	-89.57792664
437	Sorce Enterprises	East Peoria	Tazewell	Dist_Center	Yes	No	No	food product distribution	40.70261002	-89.53809357
438	JH Benedict	East Peoria	Tazewell	Industry	Yes	No	No	metal fabrication (steel)	40.70317841	-89.53780365
439	LS Building Products	East Peoria	Tazewell	Industry	Yes	No	No	residential building products	40.70470047	-89.53697205
440	Waite Equipment	East Peoria	Tazewell	Industry	Yes	No	No	material handling equipment manufacturer (steel)	40.70590973	-89.53636932
441	IVP Plastics	Washington	Tazewell	Industry	Yes	No	No	plastics injection molding	40.70817184	-89.44657898
442	BTD	Washington	Tazewell	Industry	Yes	No	No	machining & fabrication (steel)	40.70087051	-89.42605591
443	Alliance Wheel Services	Washington	Tazewell	Industry	Yes	No	No	railcar wheel & axle reconditioning	40.69972229	-89.4106369
444	Precision Laser Services	East Peoria	Tazewell	Industry	Yes	No	No	metal machining, turning, & fabrication (steel)	40.70841217	-89.5322113
445	CRST International	East Peoria	Tazewell	Carrier	Yes	No	No	trucking company	40.71168518	-89.53340149
446	Kelley Ironworks	East Peoria	Tazewell	Industry	Yes	No	No	metal raiiling manufacturer (steel)	40.71739578	-89.53212738
447	Ray Machine & Manufacturing	East Peoria	Tazewell	Industry	Yes	No	No	machining (steel)	40.72234344	-89.5304184
448	Boley Tool & Machine Works	East Peoria	Tazewell	Industry	Yes	No	No	machining (steel)	40.73949432	-89.52126312

ID	Name	City	County	Type	Truck	Rail	Barge	Commodities	Latitude	Longitude
449	Caterpillar	Washington	Tazewell	Industry	Yes	No	No	heavy equipment manufacturer (steel)	40.74019623	-89.48977661
450	G&D Transportation	East Peoria	Tazewell	Carrier	Yes	No	No	trucking company	40.71924591	-89.5304184
451	Roadway Express	East Peoria	Tazewell	Carrier	Yes	No	No	trucking company	40.72143173	-89.52926636
452	Kenway Transportation	East Peoria	Tazewell	Carrier	Yes	No	No	trucking company	40.72150803	-89.53055573
453	Goodwill Logistics	East Peoria	Tazewell	Dist_Center	Yes	Potential	No	household products donations distribution	40.67141724	-89.53762817
454	UCM	East Peoria	Tazewell	Industry	Yes	Potential	No	aggregates	40.6653862	-89.51177979
455	Roanoke Concrete Products	Bay View Gardens	Woodford	Industry	Yes	No	No	aggregates	40.77439117	-89.52797699
456	Roanoke Concrete Products	Pekin	Tazewell	Industry	Yes	Potential	No	concrete products	40.55056763	-89.66496277
457	United Ready-Mix	Pekin	Tazewell	Industry	Yes	No	No	concrete products	40.54284668	-89.66536713
458	Roanoke Concrete Products	Galesburg	Knox	Industry	Yes	No	No	concrete products	40.93177795	-90.3299942
459	Galesburg Builders Supply	Galesburg	Knox	Industry	Yes	Potential	No	concrete products	40.93143845	-90.33215332
460	Roanoke Concrete Products	Lincoln	Logan	Industry	Yes	Potential	No	concrete products	40.14302444	-89.3675766
461	Roanoke Concrete Products	Petersburg	Menard	Industry	Yes	Potential	No	concrete products	40.01979828	-89.85005188
462	Morton Ready-Mix	Morton	Tazewell	Industry	Yes	Potential	No	concrete products	40.60721207	-89.48381042
463	Curry Ready-Mix	Mason City	Mason	Industry	Yes	No	No	concrete products	40.20160675	-89.69533539
464	Canton Ready-Mix	Canton	Fulton	Industry	Yes	No	No	concrete products	40.55984116	-90.06706238
465	Lincolnland Concrete	Springfield	Sangamon	Industry	Yes	Potential	No	concrete products	39.74225235	-89.76542664
466	Capitol Ready-Mix	Springfield	Sangamon	Industry	Yes	No	No	concrete products	39.74627686	-89.71357727
467	Springfield Concrete Recycling	Springfield	Sangamon	Industry	Yes	Potential	No	aggregates	39.80585861	-89.6266861
468	Capitol Ready-Mix	Springfield	Sangamon	Industry	Yes	Potential	No	concrete products	39.80522537	-89.6292572
469	Morgan Scott Ready-Mix	Jacksonville	Morgan	Industry	Yes	No	No	concrete products	39.72470856	-90.21601105
470	LCI Concrete	Beardstown	Cass	Industry	Yes	No	No	concrete products	39.99581528	-90.37862396
471	Clinard Ready-Mix	Mt. Sterling	Brown	Industry	Yes	No	No	concrete products	39.98717117	-90.77581024
472	LCI Concrete	Colchester	McDonough	Industry	Yes	No	No	concrete products	40.43777084	-90.76087189
473	Cortelyou Ready-Mix	Bushnell	McDonough	Industry	Yes	No	No	concrete products	40.55280685	-90.51856232
474	Ideal Ready-Mix	Roseville	Warren	Industry	Yes	No	No	concrete products	40.72935104	-90.66104889
475	All American Ready-Mix	Springfield	Sangamon	Industry	Yes	Potential	No	concrete products	39.84842682	-89.61881256
476	CF Industries	Kingston Mines	Peoria	Terminal	Yes	No	Yes	fertilizer	40.55610657	-89.78026581
477	Growmark	Mapleton	Peoria	Terminal	Yes	Yes	Yes	fertilizer	40.5540657	-89.74835205
478	Growmark	Mapleton	Peoria	Terminal	Yes	Yes	Yes	fertilizer	40.55628967	-89.75011444
479	Caterpillar	Mapleton	Peoria	Industry	Yes	Yes	No	heavy equipment manufacturer (steel)	40.55940247	-89.74803162
480	Arxada	Mapleton	Peoria	Industry	Yes	Potential	No	crop protection products (chemicals)	40.56443405	-89.73007202
481	Ingredion	Mapleton	Peoria	Industry	Yes	Yes	No	consumer product ingredients (chemicals)	40.56468964	-89.72822571
482	Evonik	Mapleton	Peoria	Industry	Yes	Yes	No	specialty chemicals	40.5652504	-89.72541046
483	Lanxess	Mapleton	Peoria	Industry	Yes	Potential	No	specialty chemicals	40.56600189	-89.72161865
484	Matheson	Mapleton	Peoria	Industry	Yes	Potential	No	industrial gases	40.57016754	-89.71450043
485	Akron Services	Glasford	Peoria	Industry	Yes	Potential	No	grain	40.57252502	-89.8098526
486	Vistra	Bartonville	Peoria	Industry	Yes	Yes	Yes	power plant (coal)	40.59566498	-89.66300201
487	Mosaic	Bartonville	Peoria	Terminal	Yes	Yes	Yes	fertilizer	40.58833694	-89.6607132
488	Brenntag	Peoria	Peoria	Dist_Center	Yes	No	No	specialty chemicals	40.63346863	-89.6608429
489	Orbis	Peoria	Peoria	Dist_Center	Yes	No	No	plastic packaging manufacturer & distributor	40.63489532	-89.66527557
490	Thrift Trucking	Peoria	Peoria	Carrier	Yes	No	No	trucking company	40.6353569	-89.66207886
491	Illini Foundry	Peoria	Peoria	Industry	Yes	Potential	No	metal castings (steel)	40.64029312	-89.6470871
492	Liberty Steel & Wire	Peoria	Peoria	Industry	Yes	Yes	No	steel wire & rod mill	40.64121246	-89.650177
493	Liberty Steel & Wire	Peoria	Peoria	Industry	Yes	Yes	No	steel wire & rod mill	40.64369965	-89.64649963
494	Coca-Cola Bottling	Peoria	Peoria	Dist_Center	Yes	No	No	beverage distributor	40.63655472	-89.65803528
495	SC2	Peoria	Peoria	Dist_Center	Yes	No	No	3PL (trucking, warehousing, & distribution)	40.65077972	-89.69215393
496	G&D Integrated	Peoria	Peoria	Dist_Center	Yes	No	No	trucking & warehousing	40.65289307	-89.69029236
497	Averitt Express	Peoria	Peoria	Carrier	Yes	No	No	trucking company	40.65533829	-89.68789673
498	Allied Iron & Steel	Peoria	Peoria	Industry	Yes	Yes	No	scrap metal	40.65881348	-89.63793182
499	Alter Trading	Peoria	Peoria	Industry	Yes	Yes	No	scrap metal	40.65838242	-89.63262177
500	Allied Iron & Steel	Peoria	Peoria	Industry	Yes	Potential	No	scrap metal	40.66021729	-89.63210297
501	Southwind RAS	Peoria	Peoria	Industry	Yes	Potential	No	residential roof shingles recycling	40.66117859	-89.62893677
502	UP	Peoria	Peoria	Carrier	Yes	Yes	No	rail yard	40.66145325	-89.63312531
503	Foundation Building Materials	Peoria	Peoria	Dist_Center	Yes	Potential	No	building materials distributor	40.66559982	-89.62693024

ID	Name	City	County	Type	Truck	Rail	Barge	Commodities	Latitude	Longitude
504	RTC Trucking	Peoria	Peoria	Carrier	Yes	No	No	trucking company	40.6654868	-89.63237762
505	Carter Paper & Packaging	Peoria	Peoria	Dist_Center	Yes	Potential	No	packaging materials distributor	40.66630936	-89.62573242
506	Hanson Aggregates	Peoria	Peoria	Terminal	Yes	Yes	Yes	aggregates	40.66476822	-89.61733246
507	Seneca Petroleum	Peoria	Peoria	Dist_Center	Yes	No	No	petroleum products	40.66462326	-89.62177277
508	Seneca Petroleum	Peoria	Peoria	Terminal	Yes	Yes	Yes	petroleum products	40.66341782	-89.61906433
509	Peoria Barge Terminal	Peoria	Peoria	Terminal	Yes	Yes	Yes	general cargo dock	40.66623688	-89.61556244
510	Advanced Asphalt	Peoria	Peoria	Terminal	Yes	Potential	Yes	asphalt recycling terminal	40.66822052	-89.61387634
511	United Ready-Mix	Peoria	Peoria	Industry	Yes	Potential	Potential	concrete products	40.67022705	-89.61274719
512	UCM	Peoria	Peoria	Industry	Yes	Potential	No	aggregates	40.67173767	-89.61288452
513	Greenbrier	Peoria	Peoria	Industry	Yes	Yes	No	railcar maintenance	40.67131042	-89.61461639
514	Niles Industrial Coatings	Peoria	Peoria	Industry	Yes	Yes	No	industrial coatings	40.67252731	-89.61560822
515	Calihan Pork Processors	Peoria	Peoria	Industry	Yes	Potential	Potential	pork processing	40.67188644	-89.61063385
516	Prairie Materials	Peoria	Peoria	Industry	Yes	Potential	No	concrete products	40.67567444	-89.6105423
517	A. Miller & Co.	Peoria	Peoria	Industry	Yes	No	No	scrap metal	40.6794281	-89.60796356
518	Cast Technologies	Peoria	Peoria	Industry	Yes	Potential	No	brass, bronze, & aluminum castings	40.68206024	-89.6007843
519	ADM	Peoria	Peoria	Industry	Yes	Yes	Yes	ethanol (corn-based)	40.67681885	-89.60552979
520	Bimbo Bakeries	Peoria	Peoria	Dist_Center	Yes	No	No	baked goods distribution	40.67728424	-89.67707062
521	FedEx	Peoria	Peoria	Carrier	Yes	No	No	trucking company	40.67807388	-89.67706299
522	Woolf	Peoria	Peoria	Dist_Center	Yes	No	No	building products distributor	40.68323135	-89.69116974
523	Frito-Lay	Peoria	Peoria	Dist_Center	Yes	No	No	snack foods	40.68677902	-89.69111633
524	AZZ	Peoria	Peoria	Industry	Yes	No	No	galvanizing & metal coatings	40.68777466	-89.70172119
525	Precision Power Source	Peoria	Peoria	Industry	Yes	No	No	power equipment enclosures (steel)	40.68743134	-89.69871521
526	Ag-Land FS	Hanna City	Peoria	Dist_Center	Yes	No	No	seed & fertilizer	40.6757431	-89.80091858
527	Edwards Moving & Rigging	Farmington	Peoria	Carrier	Yes	No	No	large equipment mover/carrier	40.69920349	-89.97532654
528	Sawmill Hydraulics	Farmington	Peoria	Industry	Yes	No	No	sawmill equipment manufacturer (steel)	40.69809723	-89.9681015
529	Akron Services	Cramer	Peoria	Industry	Yes	No	No	grain & fertilizer	40.69042969	-89.94533539
530	Philippi-Hagenbuch	Peoria	Peoria	Industry	Yes	No	No	industrial vehicle accessories manufacturer	40.68940735	-89.71069336
531	Standard Sheet Metal Works	Peoria	Peoria	Industry	Yes	No	No	metal machining & fabrication (steel)	40.69108963	-89.69077301
532	Benchmark Cabinets & Millwork	Peoria	Peoria	Industry	Yes	No	No	custom cabinets & woodworking	40.68998337	-89.68817902
533	Westside Aggregates	Peoria	Peoria	Industry	Yes	No	No	aggregates	40.70652771	-89.63023376
534	PMP Fermentation Products	Peoria	Peoria	Industry	Yes	Yes	Potential	specialty chemicals	40.6951828	-89.58016968
535	Corbion	Peoria	Peoria	Industry	Yes	Potential	No	specialty chemicals	40.69620132	-89.5793457
536	Peoria Pump	Peoria	Peoria	Dist_Center	Yes	No	No	pump & pipe distributor	40.70075226	-89.57473755
537	O'Brien Steel	Peoria	Peoria	Industry	Yes	Potential	No	metal machining & fabrication (steel)	40.70174408	-89.57285309
538	O'Brien Steel	Peoria	Peoria	Industry	Yes	Yes	No	metal machining & fabrication (steel)	40.7038002	-89.56967163
539	Komatsu	Peoria	Peoria	Industry	Yes	Yes	Potential	heavy equipment manufacturer (steel)	40.70900345	-89.56185913
540	Bill Doran Company	Peoria	Peoria	Dist_Center	Yes	No	No	wholesale florist	40.71403503	-89.56705475
541	Rohn Products	Peoria	Peoria	Industry	Yes	Potential	Potential	tower manufacturer (steel)	40.71617508	-89.55747223
542	Ivex Specialty Paper	Peoria	Peoria	Industry	Yes	Potential	Potential	paper products manufacturer	40.71760178	-89.55693054
543	Prairie Farms Dairy	Peoria	Peoria	Industry	Yes	No	No	dairy products	40.71152115	-89.61243439
544	Journal Star	Peoria	Peoria	Industry	Yes	No	No	newspaper publisher	40.72517014	-89.55989838
545	Central Transport	Peoria Heights	Peoria	Carrier	Yes	No	No	trucking company	40.75203705	-89.56284332
546	RNJ Distribution	Peoria Heights	Peoria	Dist_Center	Yes	No	No	beverage distributor	40.7459259	-89.57910156
547	Ag-Land FS	Elmwood	Peoria	Industry	Yes	Potential	No	grain	40.77681732	-89.96538544
548	Keurig Dr. Pepper	Edwards	Peoria	Dist_Center	Yes	No	No	beverage distributor	40.77737045	-89.75312805
549	Micro Products	Peoria Heights	Peoria	Industry	Yes	No	No	welding machine manufacturer (steel)	40.76602173	-89.5710907
550	Natural Fiber Welding	Peoria Heights	Peoria	Industry	Yes	No	No	plant-based fibers/materials manufacturer	40.76657104	-89.57142639
551	Quality Metal Products	Peoria Heights	Peoria	Industry	Yes	Potential	No	metal machining & fabrication (steel)	40.77126312	-89.57154083
552	S&S Builders Hardware	Peoria	Peoria	Industry	Yes	No	No	commercial doors & related hardware	40.78390121	-89.60619354
553	Negwer	Peoria	Peoria	Dist_Center	Yes	Potential	No	building materials distributor	40.788311	-89.61154938
554	WCR	Peoria	Peoria	Industry	Yes	No	No	industrial heat exchangers (steel)	40.78500366	-89.61781311
555	Marketplace Selections	Peoria	Peoria	Dist_Center	Yes	No	No	beverage distributor	40.78625488	-89.61999512
556	Baumgarten Distributing	Peoria	Peoria	Dist_Center	Yes	No	No	beverage distributor	40.78743744	-89.61807251
557	Hagerty Supply	Peoria	Peoria	Dist_Center	Yes	No	No	industrial fasteners, cutting tools, & adhesives	40.78747177	-89.61578369
558	Ameren	Peoria	Peoria	Dist_Center	Yes	No	No	storage/distribution of power equipment	40.79154205	-89.61967468

ID	Name	City	County	Type	Truck	Rail	Barge	Commodities	Latitude	Longitude
559	Advanced Technology Services	Peoria	Peoria	Industry	Yes	No	No	industrial equipment maintenance & parts	40.78715134	-89.62359619
560	JT Fennell	Peoria	Peoria	Industry	Yes	No	No	custom steel fabrication	40.78979492	-89.62294769
561	Maui Jim Sunglasses	Peoria	Peoria	Dist_Center	Yes	No	No	sunglasses manufacturing & distribution	40.78827286	-89.62901306
562	Community Wholesale Tire	Peoria	Peoria	Dist_Center	Yes	No	No	wholesale tire distributor	40.79111099	-89.62979889
563	Lynch Aluminum	Peoria	Peoria	Industry	Yes	Potential	No	rain gutter related aluminum products	40.79521179	-89.62023926
564	G&D Integrated	Peoria	Peoria	Industry	Yes	Potential	No	trucking, warehousing, & steel-related manufacturing	40.79659653	-89.62013245
565	Trigo-SCSI	Peoria	Peoria	Dist_Center	Yes	No	No	logistics support equipment	40.79122162	-89.62249756
566	Alcast	Peoria	Peoria	Industry	Yes	No	No	aluminum castings	40.79522324	-89.62249756
567	Certified Heat Treating	Peoria	Peoria	Industry	Yes	No	No	metal heat treating	40.79562759	-89.62227631
568	Kuusakoski	Peoria	Peoria	Industry	Yes	No	No	recycling	40.79732895	-89.62429811
569	Blue Ridge Forge	Peoria	Peoria	Industry	Yes	No	No	lifting device forging (steel)	40.79755402	-89.62661743
570	Rheo Engineering	Peoria	Peoria	Industry	Yes	No	No	material handling & processing equipment (steel)	40.79499817	-89.62983704
571	Hanley Steel	Peoria	Peoria	Industry	Yes	No	No	steel fabricator	40.79467773	-89.62795258
572	Parker	Peoria	Peoria	Industry	Yes	No	No	hose, seal, & o-ring manufacturer	40.79724503	-89.63671112
573	Kickapoo Sand & Gravel	Kickapoo	Peoria	Industry	Yes	No	No	aggregates	40.81248474	-89.73773193
574	Triple U Trucking	Kickapoo	Peoria	Carrier	Yes	No	No	trucking company	40.81258011	-89.70737457
575	Shamrock Plastics	Peoria	Peoria	Industry	Yes	No	No	plastics manufacturer	40.81088257	-89.63321686
576	Brewers Distributing	Peoria	Peoria	Dist_Center	Yes	No	No	beverage distributor	40.79880524	-89.62927246
577	Peoria Production Solutions	Peoria	Peoria	Industry	Yes	No	No	packaging manufacturer	40.79875946	-89.62453461
578	Symmetry Elevating Solutions	Mossville	Peoria	Industry	Yes	Potential	No	elevator & lift manufacturer (steel)	40.81006241	-89.56809235
579	Midwest Fiber	Mossville	Peoria	Industry	Yes	No	No	materials recycling	40.82918167	-89.56085968
580	Good Forest Timber	Mossville	Peoria	Industry	Yes	No	No	timber merchant, firewood, & mulch	40.8302536	-89.56082153
581	Sprayer Specialties	Brimfield	Peoria	Dist_Center	Yes	No	No	ag spray equipment distributor	40.82959747	-89.8680191
582	AgReliant Genetics	Brimfield	Peoria	Industry	Yes	No	No	seed research/development	40.83042908	-89.95289612
583	AgReliant Genetics	Brimfield	Peoria	Dist_Center	Yes	No	No	seed	40.83019638	-89.95613098
584	Brimfield Agri-Services	Brimfield	Peoria	Dist_Center	Yes	No	No	seed & fertilizer	40.84755707	-89.88519287
585	Kress	Brimfield	Peoria	Industry	Yes	No	No	heavy equipment manufacturer (steel)	40.84563446	-89.8874588
586	Caterpillar	Mossville	Peoria	Industry	Yes	No	No	heavy equipment manufacturer (steel)	40.83983612	-89.56161499
587	Caterpillar	Mossville	Peoria	Industry	Yes	No	No	heavy equipment manufacturer (steel)	40.83956146	-89.55518341
588	Caterpillar	Mossville	Peoria	Industry	Yes	No	No	heavy equipment manufacturer (steel)	40.84461594	-89.55589294
589	Caterpillar	Mossville	Peoria	Industry	Yes	No	No	heavy equipment manufacturer (steel)	40.84784698	-89.55375671
590	SC2	Mossville	Peoria	Dist_Center	Yes	No	No	3PL (trucking, warehousing, & distribution)	40.85874176	-89.55538177
591	Roanoke Concrete Products	Mossville	Peoria	Industry	Yes	No	No	concrete products	40.85727692	-89.56160736
592	Buckeye Terminals	Mossville	Peoria	Dist_Center	Yes	No	No	fuel pipeline distribution terminal	40.86228561	-89.55817413
594	Trimco	Dunlap	Peoria	Dist_Center	Yes	No	No	door & related hardware distributor	40.85401917	-89.6787796
595	Monica Elevator	Dunlap	Peoria	Industry	Yes	No	No	grain	40.86254883	-89.67347717
596	Akron Services	Brimfield	Peoria	Industry	Yes	No	No	grain	40.85630798	-89.929245
597	Chillicothe Metal Company	Rome	Peoria	Industry	Yes	No	No	industrial equipment enclosures (steel & aluminum)	40.87942505	-89.52025604
598	Akron Services	Dunlap	Peoria	Industry	Yes	Yes	No	grain, seed, & fertilizer	40.9019928	-89.65428162
599	Custom Power Products	Edelstein	Peoria	Industry	Yes	No	No	power generation/controls equipment (steel)	40.92918777	-89.62997437
600	River Valley Co-Op	Edelstein	Peoria	Dist_Center	Yes	No	No	seed	40.93125534	-89.62901306
601	RVF Seed	Princeville	Peoria	Dist_Center	Yes	No	No	seed	40.93202209	-89.69535828
602	FCA	Princeville	Peoria	Industry	Yes	Potential	No	industrial packaging manufacturer	40.92383194	-89.75280762
603	Seneca Foods	Princeville	Peoria	Industry	Yes	Yes	No	fruit/vegetable grower, processor, & distributor	40.92359161	-89.75827789
604	EC Harms Metal Fabricators	Princeville	Peoria	Industry	Yes	No	No	custom metal fabrication (steel)	40.93950653	-89.75814819
605	Ag-Land FS	Monica	Peoria	Dist_Center	Yes	No	No	seed & fertilizer	40.92891693	-89.81266022
606	Monica Elevator	Monica	Peoria	Industry	Yes	Potential	No	grain	40.92272568	-89.82132721
607	Liberty Steel & Wire	Peoria	Peoria	Terminal	Yes	Yes	Yes	scrap metal & steel fabrication by-products (apparently)	40.63527679	-89.63690948

Appendix B

Airport Improvements Technical Memorandum



Date: 10/6/2023

To: Havana Regional Port District (HRPD)

From: Hanson Professional Services Inc.

Project No.: 22i0044

Project Name: Port Market Analysis & Master Plan

Subject: Airport Improvements Summary & Exhibits

Copy to File, Others:

Havana Regional Airport – Air Transportation Facility

The Havana Regional Airport (910), operated by the HRPD, is one of the community's transportation assets. 910 currently provides a 2,235-foot long by 100-foot-wide turf runway, apron, and hangar facilities. 910 is part of the Federal Aviation Administration's (FAA) National Plan of Integrated Airport Systems as a basic general aviation airport. It is also part of the Illinois Aviation System Plan (IASP) as a basic airport. The 2022 IASP report includes a report card for each airport in the IASP comparing the airport to the standards for its classification. The areas in which 910 does not meet the IASP recommended standards for a basic airport are a paved runway, at least a partial parallel taxiway, and visual guidance systems.

To better meet the IASP recommended standards for a basic airport and provide improved all-weather accessibility and increased utility, conceptual paved runway options were considered as outlined below. *FAA Advisory Circular 150/5300-13B: Airport Design* and other applicable FAA design standards were used in the formulation of the concepts. Also, the FAA design standards recommend providing at least 95% wind coverage (95% of the time the crosswind component is less than the demonstrated crosswind capability of an aircraft), which was considered. As conceptual options, further study through an FAA airport layout plan preparation process and required environmental documentation would be needed before pursuing development. The following factors were used in developing the concepts.

- Use design standards for airport reference code (ARC) B-II all aircraft (approach speed up to 121 knots and wingspan up to 79 feet).
- Serve at least aircraft weighing up to 12,500 pounds single wheel (FAA Utility classification and preferable greater than 12,500 pounds FAA large classification).
- Keep existing apron and hangar facilities.
- Provide up to a 4,400-foot paved runway to accommodate small business jets.
- Provide clear runway safety and object free areas.
- Avoid or minimize roads within the runway protection zones (RPZ), trapezoidal area beyond the runway end to protect people and property on the ground.
- Keep existing turf runway unless replaced by a paved east-west runway to increase wind coverage.
- Minimize land acquisition but purchase full parcels.
- Consider additional development opportunities.

Option 1: Runway 9/27 (4,000 feet ARC B-II Utility)

As shown in **Figure B1**, this option keeps the existing east-west runway alignment. It maximizes the runway length between State Road 97 and 1750 East Road.

Advantages

- 4,000-foot paved runway.
- 14 CFR Part 77 approach surface (20:1 slope) and vertical guidance surface (30:1 slope) clear the roads off each runway end by greater than 15 feet.
- Allows for hangar expansion south of the runway.

Disadvantages

- Only enough road clearance to serve FAA utility aircraft.
- Airport would need to acquire land to the east and avigation easements within the RPZs/approach surfaces that extend beyond the existing and future property boundary.
- Does not meet FAA wind coverage requirement of at least 95%.
- Both RPZs contain a road.

Option 2: Runway 18/36 East of Apron (2,900 feet ARC B-II Large)

As shown in **Figure B2**, this option keeps the runway and RPZ within the airport property and the parcel north of the airport.

Advantages

- 2,900-foot paved runway.
- Opens land adjacent to 1750E Road for development.
- No roads in RPZs.

Disadvantages

- Limitation on business jet operations due to runway length.
- Drainage improvements needed (runway crosses over drainage canal).
- Eliminates hangar expansion to the east.
- Airport would need to acquire property to the north.
- The paved runway alone does provide at least 95% coverage.

Option 3: Runway 18/36 West of Apron (2,900 feet ARC B-II Large)

As shown in **Figure B3**, this option is similar to Option 2, but it moves the runway west of the apron.

Advantages

- 2,900-foot paved runway.
- Allows for hangar expansion to the east.
- No roads in RPZs.

Disadvantages

- Limitation on aircraft operations due to runway length.
- Drainage improvements needed (runway crosses over drainage canal).
- Airport would need to acquire property to the north.
- The paved runway alone does not provide at least 95% wind coverage.
- Ground access would need to be developed to open the land east of the north-south runway for development.

Option 4: Runway 18/36 (3,750 feet ARC B-II Large)

Option 4, as shown in **Figure B4**, allows the RPZ to extend north of the parcel north of the airport. This increases the available runway length to 3,750 feet.

Advantages

- 3,750-foot paved runway.
- Allows for hangar expansion to the west.
- No roads in RPZs.

Disadvantages

- Airport would need to acquire land to the north and an aviation easement within the RPZ/approach surface that extends beyond the future property boundary.
- Drainage improvements needed (runway crosses over drainage canal).
- Limitation on business jet operations due to runway length.
- The paved runway alone does not provide at least 95% wind coverage.
- Ground access would need to be developed to open the land east of the north-south runway for development.

Option 5: Runway 18/36 (4,400 feet ARC B-II Large)

Option 5, as shown on **Figure B5**, allows East County Road 1100N to be within the south RPZ, with adequate approach slope clearance to provide a 4,400-foot runway to ARC B-II Large standards.

Advantages

- 4,400-foot paved runway.
- Allows for hangar expansion to the west.
- Runway length could accommodate business jet operations.

Disadvantages

- Drainage improvements needed (runway crosses over drainage canal).
- Airport would need to acquire land to the north and aviation easements within the RPZs/approach surfaces that extend beyond the existing and future property boundary.
- The paved runway alone does not provide at least 95% wind coverage.
- Road in south RPZ.
- Ground access would need to be developed to open the land east of the north-south runway for development.

Option 6: Runway 18/36 (4,400 feet ARC B-II Large)

Option 6, as shown in **Figure B6**, also provides a 4,400-foot runway, but it is shifted farther north. This would eliminate the road in the RPZ but would require additional land acquisition.

Advantages

- 4,400-foot paved runway.
- Allows for hangar expansion to the west.
- Runway length could accommodate business jet operations.
- No roads in RPZ.

Disadvantages

- Drainage improvements needed (runway crosses over drainage canal).
- Airport would need to acquire land to the north and an avigation easement within the RPZ/approach surface that extends beyond the future property boundary.
- The paved runway alone does not provide at least 95% wind coverage.
- Access would need to be developed to open the land east of the north-south runway for development.

Option 7: Runway 16/34 (4,400 feet ARC B-II Large)

To improve the wind coverage, Option 7, as shown in **Figure B7**, uses a southeast – northwest alignment to provide a 4,400-foot runway.

Advantages

- 4,400-foot paved runway.
- Runway orientation provides greatest wind coverage at 91.10%.
- Allows for hangar expansion to the east.
- No roads in RPZs.
- Opens potential development area along 1750 East Road.

Disadvantages

- Airport would need to acquire land to the north and east and avigation easements within the RPZs/approach surfaces that extend beyond the future property boundary.
- Paved runway alone does not provide at least 95% wind coverage.

The runway alternatives focused on aeronautical development including providing space for expansion of hangar facilities. In addition, to the aeronautical functions, compatible nonaeronautical development can also be considered at 910 after reserving the areas to meet the aeronautical needs. The placement of a paved runway will influence the amount of developable land on the airport or necessitate the development of ground access to the on-airport development land.

Air Freight

The air freight analysis, as discussed in the body of the report, indicated the only air freight movement is within the larger Study Area B, and assumed to be at the General Downing – Peoria International Airport. The majority of which is related to machinery, instruments, photo equipment or optical equipment and small packaged freight shipments. The analysis indicated that if a company that utilizes air freight transportation were to locate in Havana, some of the projected increase may be able to be captured with improvements at 910.

In addition, a common air freight use of general aviation airports is emergency part shipment or repair or production parts to keep production operational at local businesses.

Nonaeronautical Development

Nonaeronautical development is typically planned on land used to protect the airport but not needed for aeronautical uses. The nonaeronautical areas need to be designated for on an airport layout plan, which is a graphical depiction of existing and future development, that is approved by the FAA. If the land was initially acquired with federal funding, a land release would also be required.

The benefit of nonaeronautical development on an airport is a diversified revenue stream to support aviation operations. The nonaeronautical land use needs to be compatible with aviation,

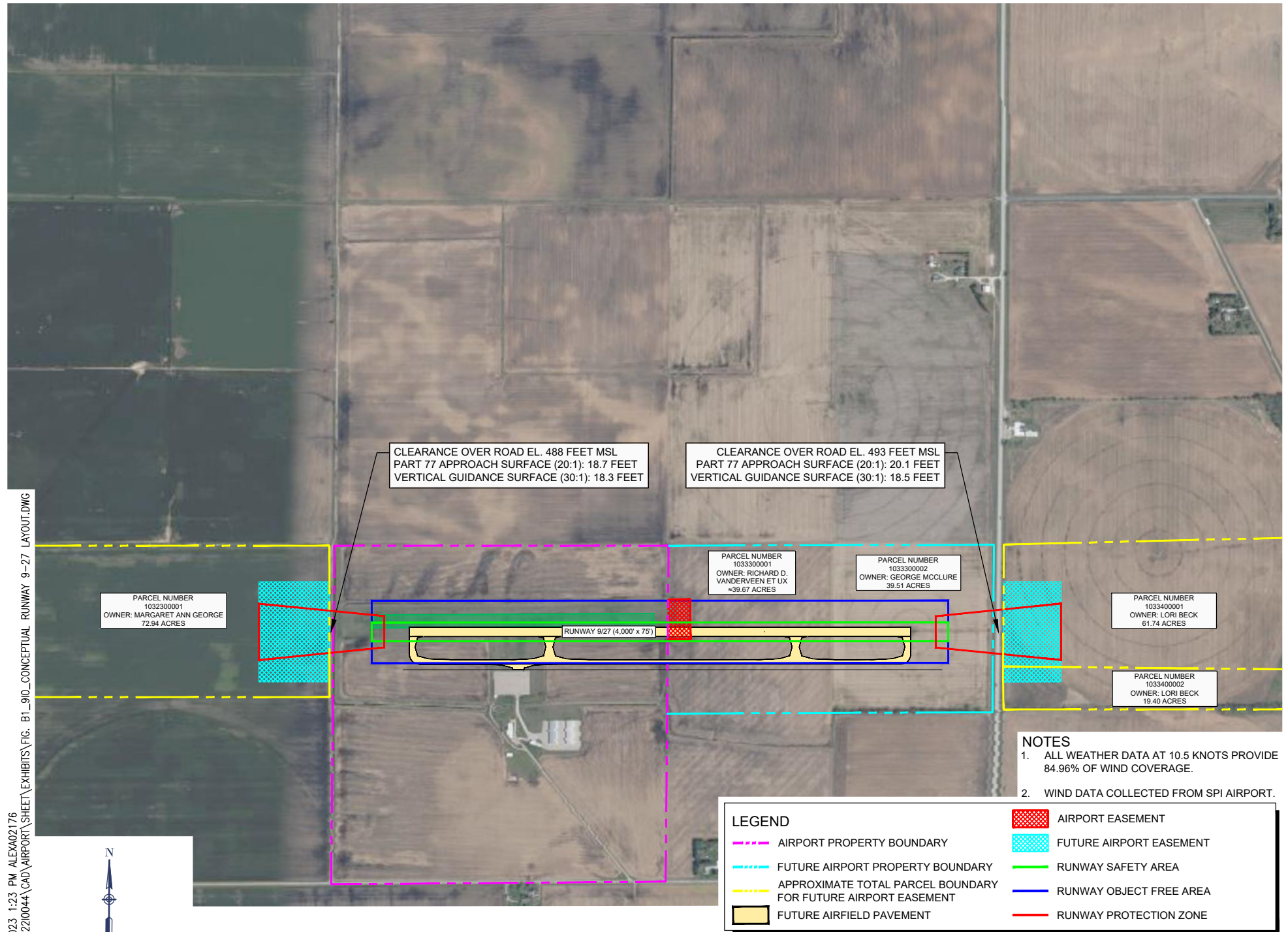
thus entities with bright lights or that generate smoke are not typically compatible uses on or adjacent to an airport.

The preliminary analysis of opportunities for the HRPD indicated the potential for an increase in grain, potentially related to a feedstock for other production, especially as the Country is seeking more renewable energy resources. While such a production facility would not likely be compatible adjacent to the airport due to height restrictions and potential exhaust, the airport could support emergency part delivery for such an operation. Non-aeronautical development at 910, could also be developed to support light industrial uses that could be developed to support port activity or be independent of the port.

Next Step

These conceptual options can be used to scope an airport layout plan update project that would include a thorough review of the options and identify a preferred development option for HRPD to pursue.

JUL 14, 2023 1:23 PM ALEXA02176
 I:\22JOB85\2210044\CAD\AIRPORT\ SHEET\EXHIBITS\FIG. B1_910_CONCEPTUAL_RUNWAY_9-27_LAYOUT.DWG



CLEARANCE OVER ROAD EL. 488 FEET MSL
 PART 77 APPROACH SURFACE (20:1): 18.7 FEET
 VERTICAL GUIDANCE SURFACE (30:1): 18.3 FEET

CLEARANCE OVER ROAD EL. 493 FEET MSL
 PART 77 APPROACH SURFACE (20:1): 20.1 FEET
 VERTICAL GUIDANCE SURFACE (30:1): 18.5 FEET

PARCEL NUMBER
 1032300001
 OWNER: MARGARET ANN GEORGE
 72.94 ACRES

PARCEL NUMBER
 1033300001
 OWNER: RICHARD D.
 VANDERVEEN ET UX
 ≈39.67 ACRES

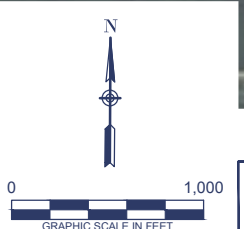
PARCEL NUMBER
 1033300002
 OWNER: GEORGE MCCLURE
 39.51 ACRES

PARCEL NUMBER
 1033400001
 OWNER: LORI BECK
 61.74 ACRES

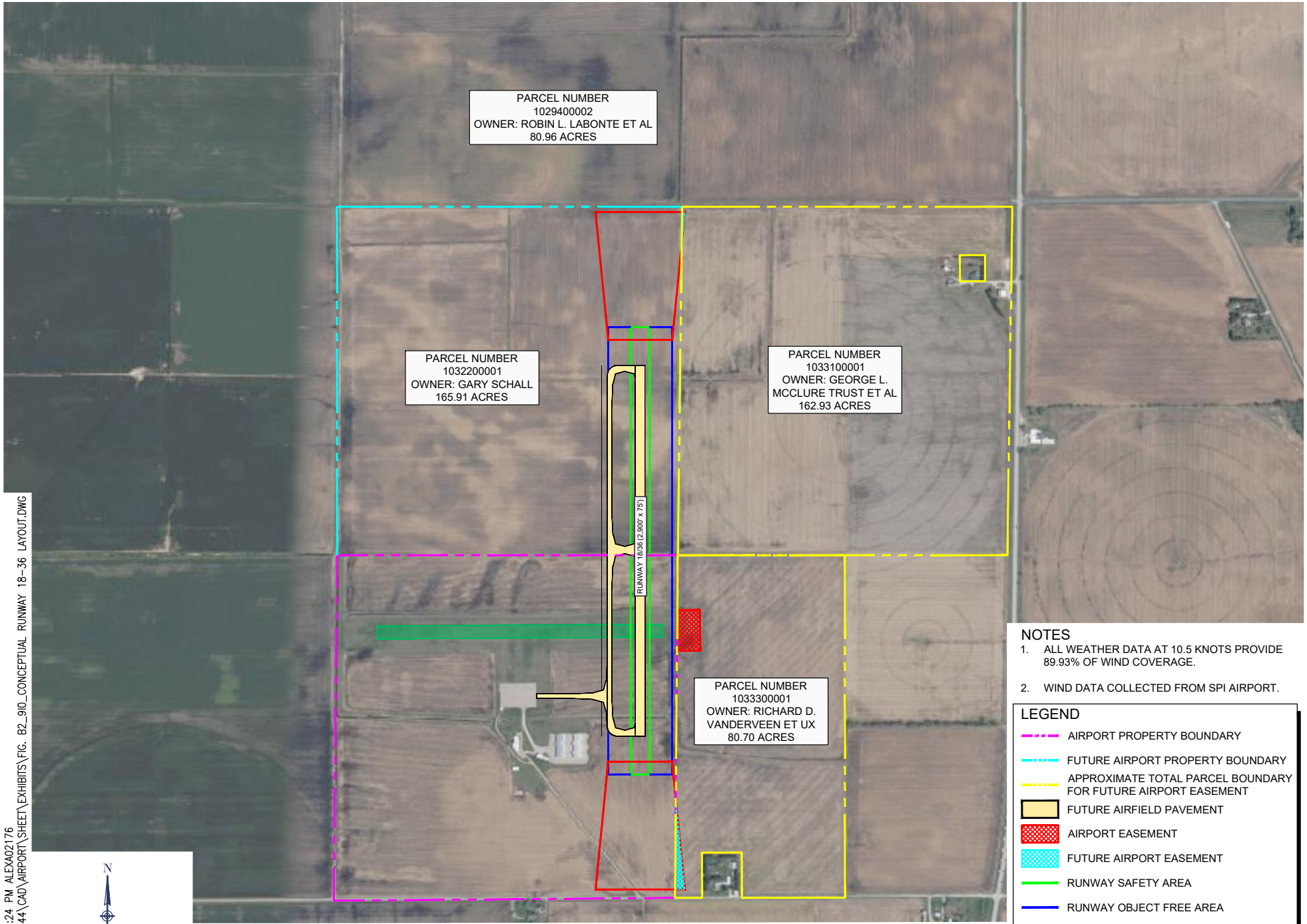
PARCEL NUMBER
 1033400002
 OWNER: LORI BECK
 19.40 ACRES

- NOTES**
- ALL WEATHER DATA AT 10.5 KNOTS PROVIDE 84.96% OF WIND COVERAGE.
 - WIND DATA COLLECTED FROM SPI AIRPORT.

LEGEND	
	AIRPORT PROPERTY BOUNDARY
	FUTURE AIRPORT PROPERTY BOUNDARY
	APPROXIMATE TOTAL PARCEL BOUNDARY FOR FUTURE AIRPORT EASEMENT
	FUTURE AIRFIELD PAVEMENT
	AIRPORT EASEMENT
	FUTURE AIRPORT EASEMENT
	RUNWAY SAFETY AREA
	RUNWAY OBJECT FREE AREA
	RUNWAY PROTECTION ZONE



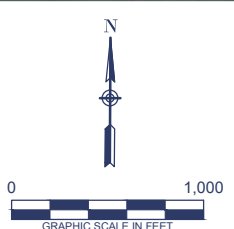
JUL 14, 2023 1:24 PM ALEXA02176 I:\22\JOBS\2210044\CAD\AIRPORT\PROJECT\EXHIBITS\FIG. B2_910_CONCEPTUAL_RUNWAY_18-36_LAYOUT.DWG



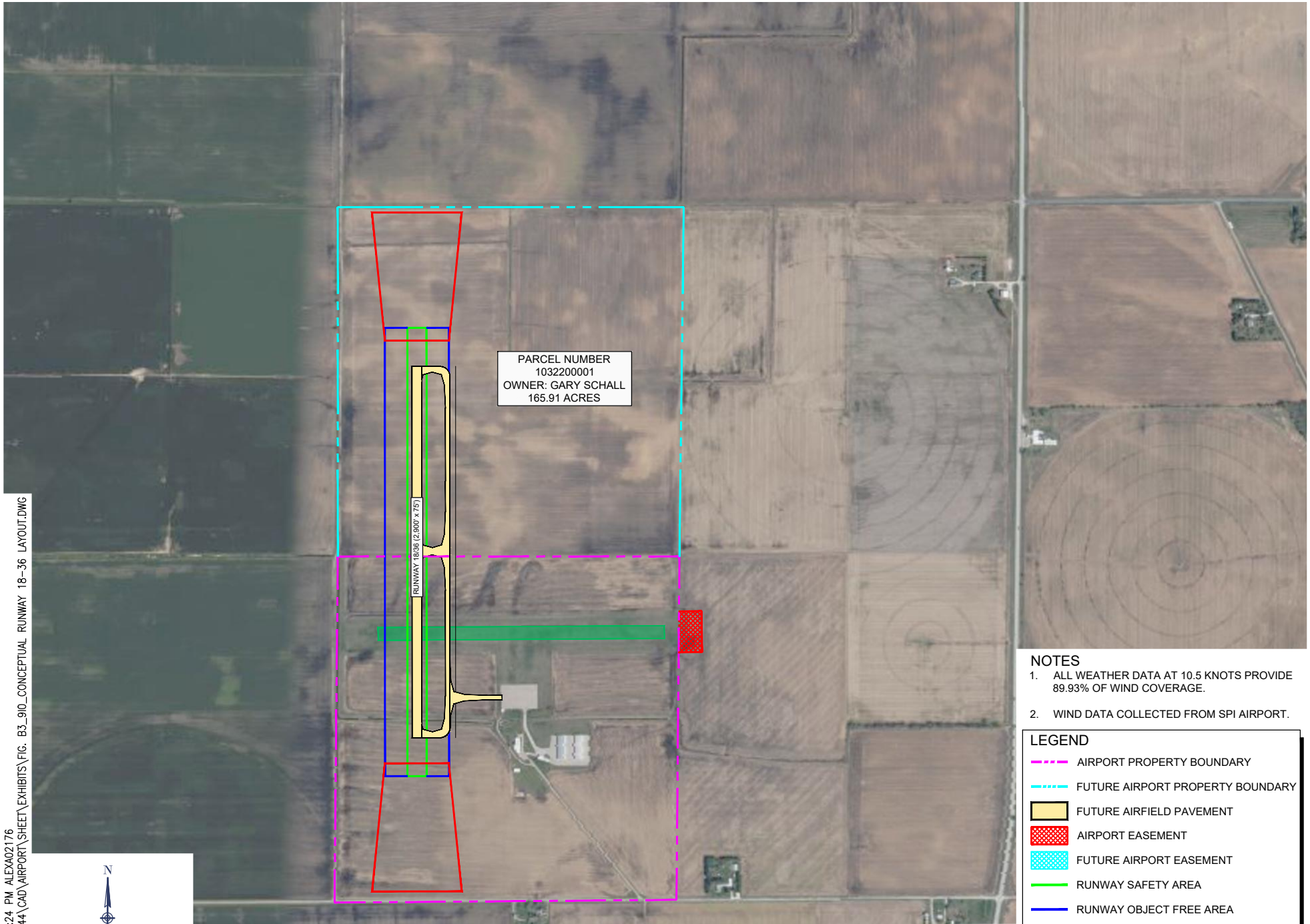
- NOTES**
1. ALL WEATHER DATA AT 10.5 KNOTS PROVIDE 89.93% OF WIND COVERAGE.
 2. WIND DATA COLLECTED FROM SPI AIRPORT.

LEGEND

	AIRPORT PROPERTY BOUNDARY
	FUTURE AIRPORT PROPERTY BOUNDARY
	APPROXIMATE TOTAL PARCEL BOUNDARY FOR FUTURE AIRPORT EASEMENT
	FUTURE AIRFIELD PAVEMENT
	AIRPORT EASEMENT
	FUTURE AIRPORT EASEMENT
	RUNWAY SAFETY AREA
	RUNWAY OBJECT FREE AREA
	RUNWAY PROTECTION ZONE



JUL 14, 2023 1:24 PM ALEXA02176 I:\22\JOBS\2210044\CAD\AIRPORT\SHEET\EXHIBITS\FIG. B3_910_CONCEPTUAL_RUNWAY_18-36_LAYOUT.DWG



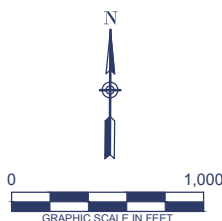
PARCEL NUMBER
1032200001
OWNER: GARY SCHALL
165.91 ACRES

RUNWAY 18/36 (2,900' x 75')

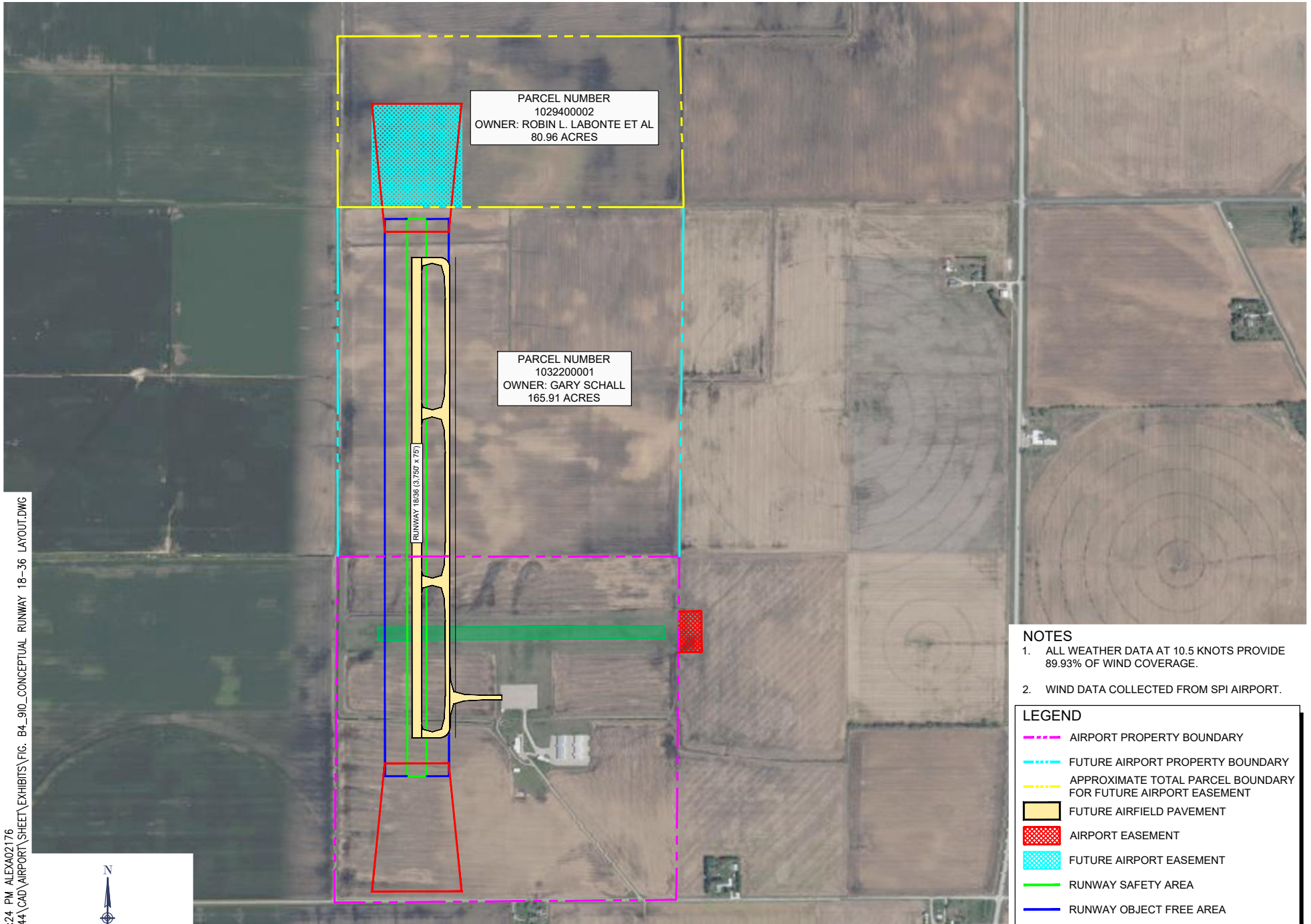
- NOTES**
1. ALL WEATHER DATA AT 10.5 KNOTS PROVIDE 89.93% OF WIND COVERAGE.
 2. WIND DATA COLLECTED FROM SPI AIRPORT.

LEGEND

	AIRPORT PROPERTY BOUNDARY
	FUTURE AIRPORT PROPERTY BOUNDARY
	FUTURE AIRFIELD PAVEMENT
	AIRPORT EASEMENT
	FUTURE AIRPORT EASEMENT
	RUNWAY SAFETY AREA
	RUNWAY OBJECT FREE AREA
	RUNWAY PROTECTION ZONE



JUL 14, 2023 1:24 PM ALEXA02176 I:\22\JOB5\2210044\CAD\AIRPORT\ SHEET\EXHIBITS\FIG. B4_910_CONCEPTUAL_RUNWAY_18-36_LAYOUT.DWG



PARCEL NUMBER
1029400002
OWNER: ROBIN L. LABONTE ET AL
80.96 ACRES

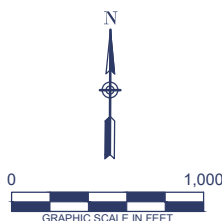
PARCEL NUMBER
1032200001
OWNER: GARY SCHALL
165.91 ACRES

RUNWAY 18/36 (3,750 x 75)

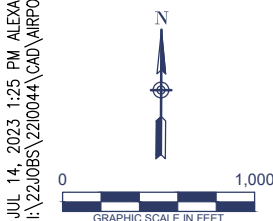
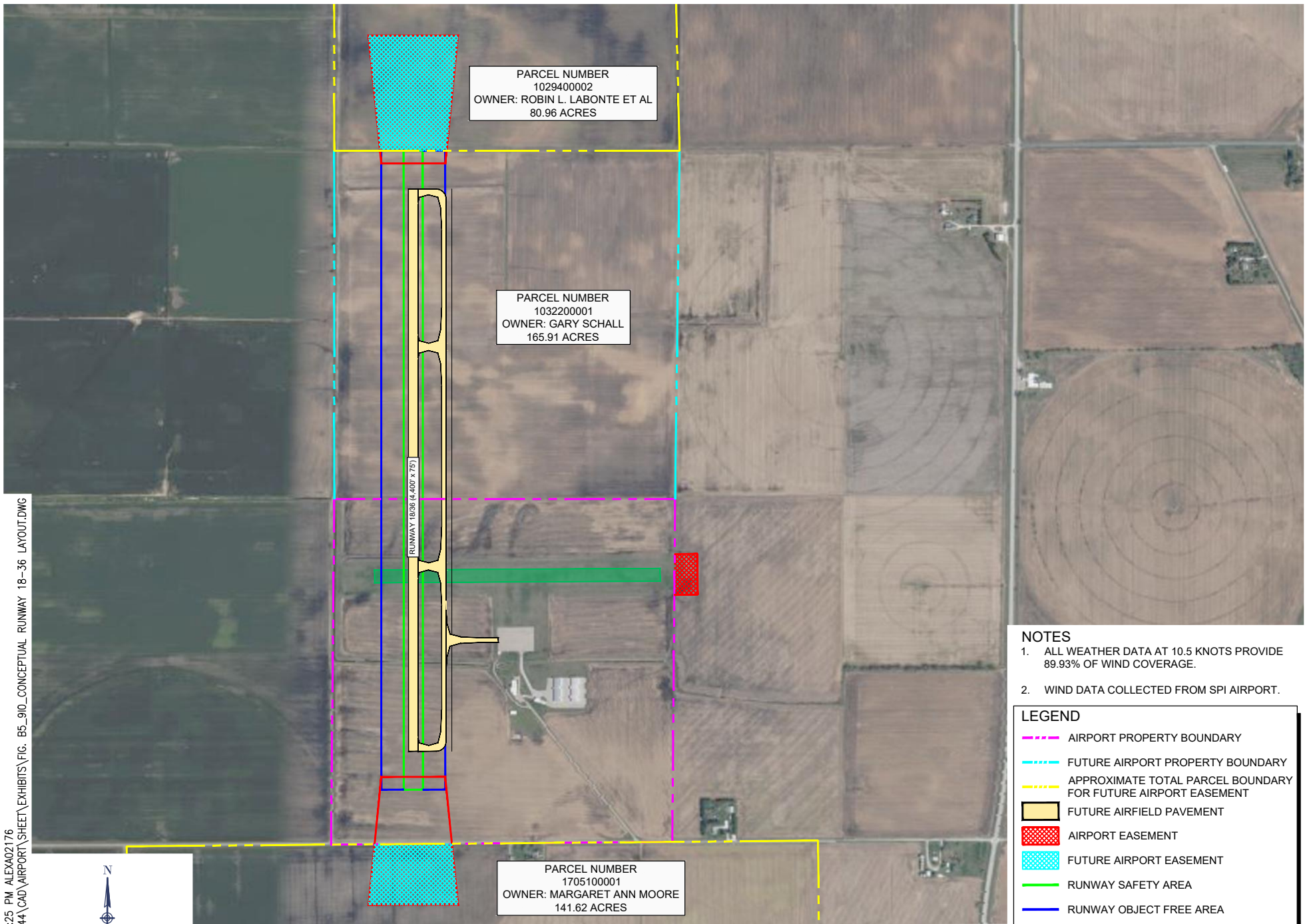
- NOTES**
- ALL WEATHER DATA AT 10.5 KNOTS PROVIDE 89.93% OF WIND COVERAGE.
 - WIND DATA COLLECTED FROM SPI AIRPORT.

LEGEND

	AIRPORT PROPERTY BOUNDARY
	FUTURE AIRPORT PROPERTY BOUNDARY
	APPROXIMATE TOTAL PARCEL BOUNDARY FOR FUTURE AIRPORT EASEMENT
	FUTURE AIRFIELD PAVEMENT
	AIRPORT EASEMENT
	FUTURE AIRPORT EASEMENT
	RUNWAY SAFETY AREA
	RUNWAY OBJECT FREE AREA
	RUNWAY PROTECTION ZONE



JUL 14, 2023 1:25 PM ALEXA02176 I:\22\JOB85\2210044\CAD\AIRPORT\PROJECT\EXHIBITS\FIG. B5_910_CONCEPTUAL_RUNWAY_18-36_LAYOUT.DWG



PARCEL NUMBER
1029400002
OWNER: ROBIN L. LABONTE ET AL
80.96 ACRES

PARCEL NUMBER
1032200001
OWNER: GARY SCHALL
165.91 ACRES

RUNWAY 18/36 (4,400' X 75')

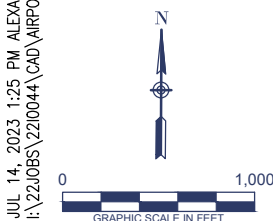
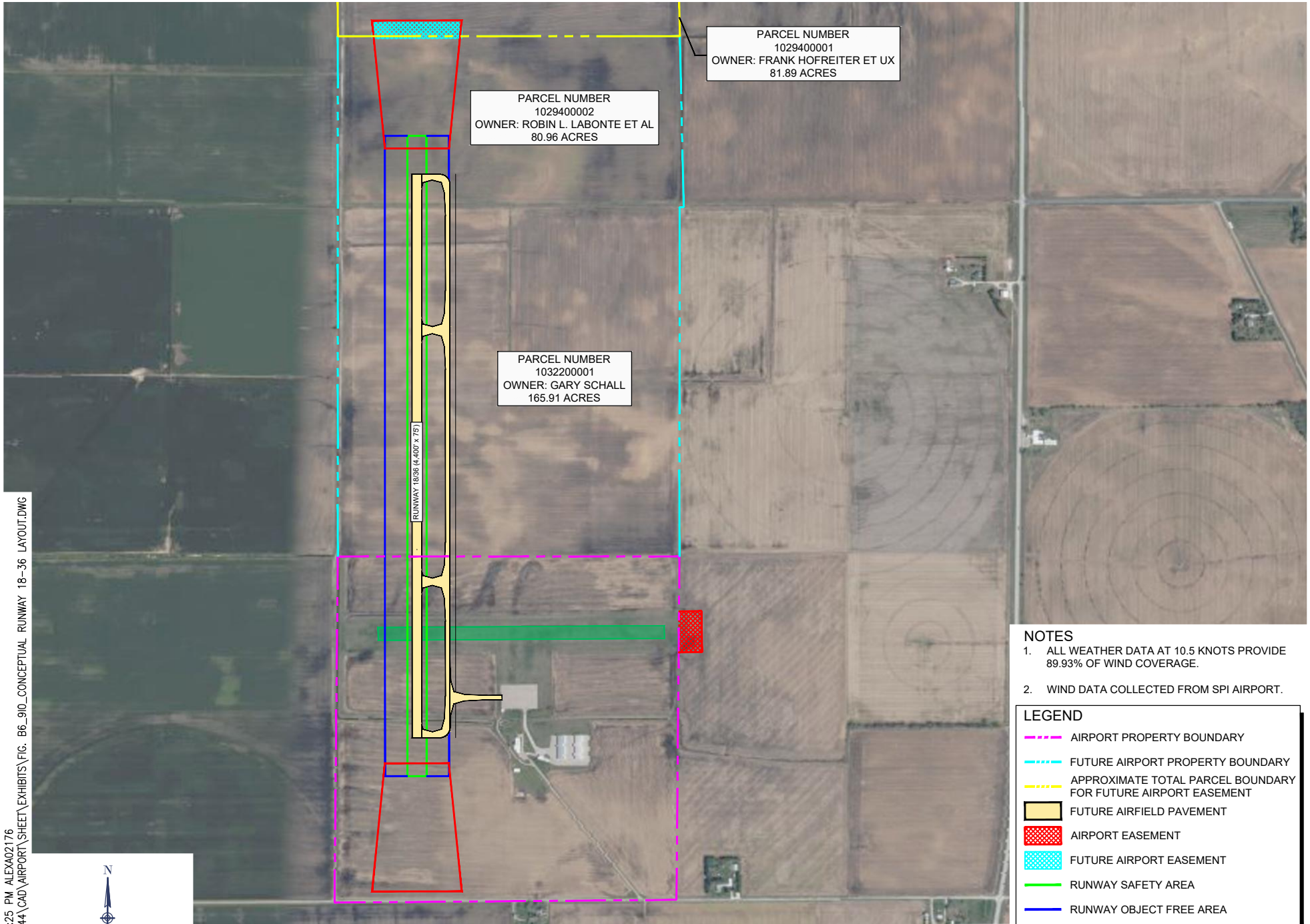
PARCEL NUMBER
1705100001
OWNER: MARGARET ANN MOORE
141.62 ACRES

- NOTES**
- ALL WEATHER DATA AT 10.5 KNOTS PROVIDE 89.93% OF WIND COVERAGE.
 - WIND DATA COLLECTED FROM SPI AIRPORT.

LEGEND

	AIRPORT PROPERTY BOUNDARY
	FUTURE AIRPORT PROPERTY BOUNDARY
	APPROXIMATE TOTAL PARCEL BOUNDARY FOR FUTURE AIRPORT EASEMENT
	FUTURE AIRFIELD PAVEMENT
	AIRPORT EASEMENT
	FUTURE AIRPORT EASEMENT
	RUNWAY SAFETY AREA
	RUNWAY OBJECT FREE AREA
	RUNWAY PROTECTION ZONE

JUL 14, 2023 1:25 PM ALEXA02176 I:\22\JOB65\2210044\CAD\AIRPORT\PROJECT\EXHIBITS\FIG. B6_910_CONCEPTUAL_RUNWAY_18-36_LAYOUT.DWG



PARCEL NUMBER
1029400002
OWNER: ROBIN L. LABONTE ET AL
80.96 ACRES

PARCEL NUMBER
1029400001
OWNER: FRANK HOFREITER ET UX
81.89 ACRES

PARCEL NUMBER
1032200001
OWNER: GARY SCHALL
165.91 ACRES

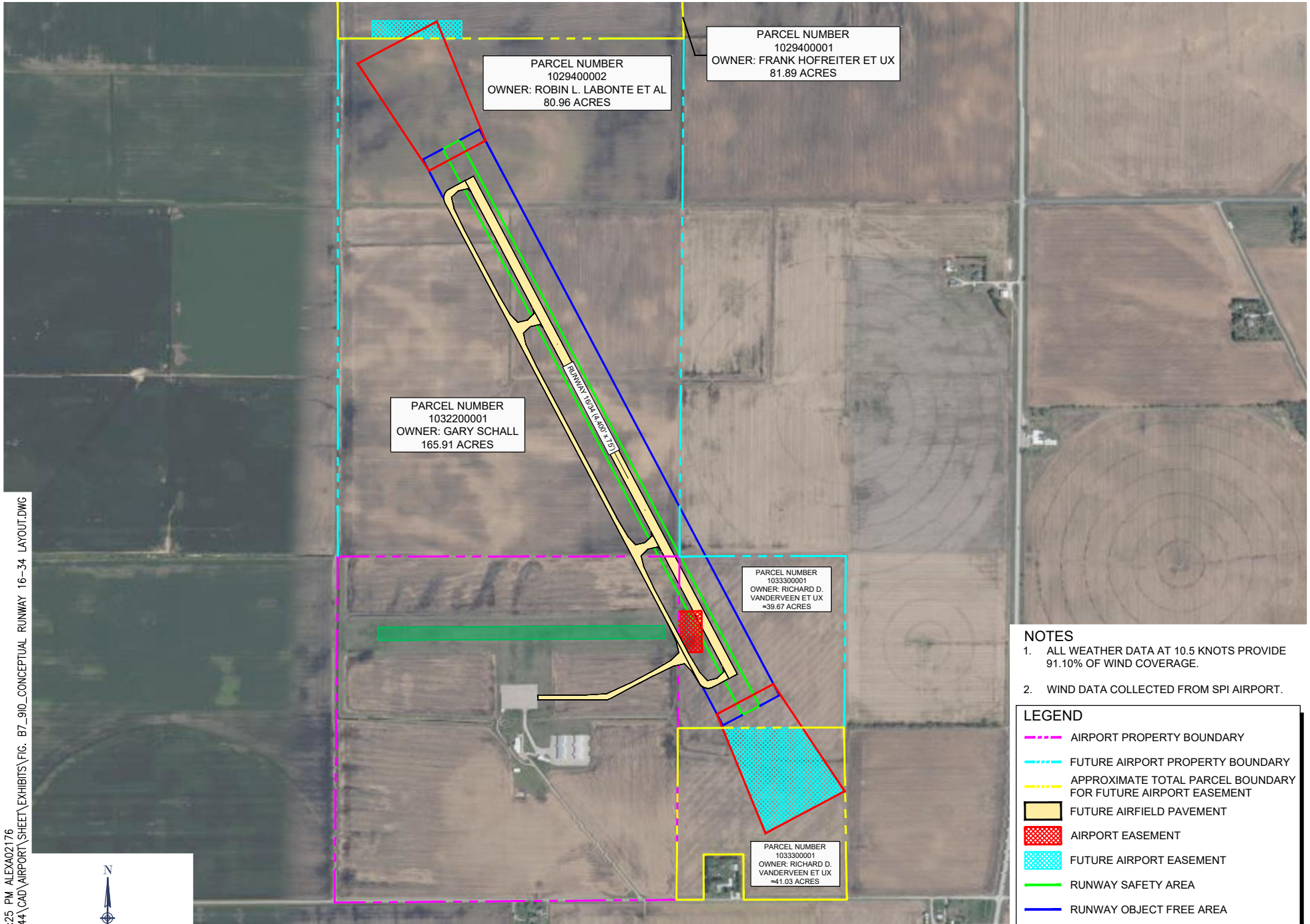
RUNWAY 18/36 (4,400' x 75')

- NOTES**
- ALL WEATHER DATA AT 10.5 KNOTS PROVIDE 89.93% OF WIND COVERAGE.
 - WIND DATA COLLECTED FROM SPI AIRPORT.

LEGEND

	AIRPORT PROPERTY BOUNDARY
	FUTURE AIRPORT PROPERTY BOUNDARY
	APPROXIMATE TOTAL PARCEL BOUNDARY FOR FUTURE AIRPORT EASEMENT
	FUTURE AIRFIELD PAVEMENT
	AIRPORT EASEMENT
	FUTURE AIRPORT EASEMENT
	RUNWAY SAFETY AREA
	RUNWAY OBJECT FREE AREA
	RUNWAY PROTECTION ZONE

JUL 14, 2023 1:25 PM ALEXA02176 I:\22\JOB5\2210044\CAD\AIRPORT\SHEET\EXHIBITS\FIG. B7_910_CONCEPTUAL_RUNWAY_16-34_LAYOUT.DWG



PARCEL NUMBER
1032200001
OWNER: GARY SCHALL
165.91 ACRES

PARCEL NUMBER
1029400002
OWNER: ROBIN L. LABONTE ET AL
80.96 ACRES

PARCEL NUMBER
1029400001
OWNER: FRANK HOFREITER ET UX
81.89 ACRES

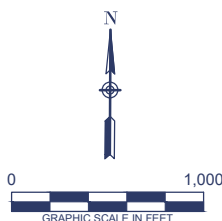
PARCEL NUMBER
103300001
OWNER: RICHARD D.
VANDERVEEN ET UX
39.67 ACRES

PARCEL NUMBER
1033300001
OWNER: RICHARD D.
VANDERVEEN ET UX
41.03 ACRES

- NOTES**
- ALL WEATHER DATA AT 10.5 KNOTS PROVIDE 91.10% OF WIND COVERAGE.
 - WIND DATA COLLECTED FROM SPI AIRPORT.

LEGEND

	AIRPORT PROPERTY BOUNDARY
	FUTURE AIRPORT PROPERTY BOUNDARY
	APPROXIMATE TOTAL PARCEL BOUNDARY FOR FUTURE AIRPORT EASEMENT
	FUTURE AIRFIELD PAVEMENT
	AIRPORT EASEMENT
	FUTURE AIRPORT EASEMENT
	RUNWAY SAFETY AREA
	RUNWAY OBJECT FREE AREA
	RUNWAY PROTECTION ZONE



Appendix C

Stakeholder Outreach



ATTACHMENT 1

Interview Script/Questions

Havana Port Market Analysis & Master Plan (22i0044/2005)
Freight Stakeholder Outreach
Interview Script/Questions

“Script”

Hanson Professional Services is under contract with the Havana Regional Port District to conduct a market assessment related to freight transportation in the region. As part of that effort, we are reaching out to some local and regional freight stakeholders to obtain input regarding perceived needs, issues, and constraints within the existing regional freight transportation system for which the Port District may be positioned to implement improvements and/or solutions. Potential improvements and/or solutions may be addressed later in the project when we develop a port development master plan.

So, if you’re willing to participate in this freight stakeholder outreach effort, I have a few questions I’d like to ask. I realize the answers to some of my questions may consist of information that is confidential or sensitive. So, any information that you choose to provide will only be published in the report in aggregate so it can’t be connected to you or your company. Are you willing to participate?

General Questions

1. How are raw materials currently transported to your facility? Where are those raw materials currently coming from?
2. Are any of those raw materials currently transported to your facility in bulk? If so, how are they transported?
3. Are finished or partially finished products shipped out from your facility?
 - a. How are they generally/typically transported?
 - b. Generally, where are they going?
4. What are your current freight transportation needs, issues, or constraints, including any related to real estate availability or infrastructure?
5. Do you have any expansion plans that could increase freight traffic to or from your facility? Does labor pool availability impact these decisions?
6. Do you anticipate any future freight transportation needs, issues, or constraints that may inhibit your company’s ability to grow?
7. Can you identify any freight transportation system improvements in the Havana region, including Mason or Fulton Counties, that could benefit your business?
8. Could your business benefit from a waterborne freight transportation option (i.e., a public river terminal)? [assumes the stakeholder doesn’t have a river terminal]
9. Could your business benefit from a rail freight transportation option (i.e., a public rail terminal)? [assumes the stakeholder doesn’t have a rail-served facility or doesn’t utilize rail transportation]
10. Could your business benefit from a freight hub and/or warehousing in the Havana area?
11. Do you perceive a need for additional freight transportation options in the region?

12. If you could ask for one thing from the community or Port District to benefit your business, what would it be?
13. Do you have any other comments, questions, or concerns regarding freight transportation in the region that we can convey to the Port District on your behalf?

Question Only for Rail-Served Facilities

1. It appears that your facility is rail served. Do you currently utilize rail service? [may have been answered in "General Questions" above]
 - a. If so, do you have any issues with your rail service? Timing? Consistency?
 - b. If you do not currently utilize rail service, why don't you?

Question Only for Potentially Rail-Served Facilities

1. It appears that it may be feasible to add rail service to your facility. Have you given that consideration or have plans to add a rail connection to your facility in the future? Why/why not?

ATTACHMENT 2

Completed Interview Forms

ADM Interview

General Questions

1. How are raw materials currently transported to your facility? Where are those raw materials currently coming from?
Take in corn, soybeans, wheat, from farmers in the area.
2. Are any of those raw materials currently transported to your facility in bulk? If so, how are they transported?
By truck (hold 850-900 bushels).
3. Are finished or partially finished products shipped out from your facility?
No.
 - a. How are they generally/typically transported?
N/A
 - b. Generally, where are they going?
N/A
4. What are your current freight transportation needs, issues, or constraints, including any related to real estate availability or infrastructure?
None related to that. In on truck, out on barge.
5. Do you have any expansion plans that could increase freight traffic to or from your facility? Does labor pool availability impact these decisions?
No.
6. Do you anticipate any future freight transportation needs, issues, or constraints that may inhibit your company's ability to grow?
Seasonal, out on barge-river affects. Too high = can't get out, too low = supply chain backed up.
7. Can you identify any freight transportation system improvements in the Havana region, including Mason or Fulton Counties, that could benefit your business?
No. Sometimes County Roads are blocked in the winter, etc.. and farmers are not able to get grain. Not a huge issue.
8. Could your business benefit from a waterborne freight transportation option (i.e., a public river terminal)? [assumes the stakeholder doesn't have a river terminal]
N/A
9. Could your business benefit from a rail freight transportation option (i.e., a public rail terminal)? [assumes the stakeholder doesn't have a rail-served facility or doesn't utilize rail transportation]
Could, but don't currently have capability.
10. Could your business benefit from a freight hub and/or warehousing in the Havana area?
No.

11. Do you perceive a need for additional freight transportation options in the region?

No.

12. If you could ask for one thing from the community or Port District to benefit your business, what would it be?

Can't think of anything.

13. Do you have any other comments, questions, or concerns regarding freight transportation in the region that we can convey to the Port District on your behalf?

No.

Ag-Land FS Interview

General Questions

1. How are raw materials currently transported to your facility? Where are those raw materials currently coming from?

Farmers transport corn, soybeans, wheat, sorghum, etc. by truck to terminals and export markets.

2. Are any of those raw materials currently transported to your facility in bulk? If so, how are they transported?

Yes, by truck.

3. Are finished or partially finished products shipped out from your facility?

No.

- a. How are they generally/typically transported?

N/A

- b. Generally, where are they going?

N/A

4. What are your current freight transportation needs, issues, or constraints, including any related to real estate availability or infrastructure?

One constraint is the lines they run into when they deliver. There are a limited number of trucks. Other farmers and elevators are delivering to the same place. If everyone goes to the same place there is some backlog. The hours of operation vary. Ethanol grinds slowly, and sometimes the elevators close until they are caught up.

5. Do you have any expansion plans that could increase freight traffic to or from your facility? Does labor pool availability impact these decisions?

On May 1st they are merging with Monique. This will bring their tonnage from 7M to 15M a year.

6. Do you anticipate any future freight transportation needs, issues, or constraints that may inhibit your company's ability to grow?

He hopes to implement rail at some point. It is a good money maker with the ability to ship more product without downtime.

7. Can you identify any freight transportation system improvements in the Havana region, including Mason or Fulton Counties, that could benefit your business?

No.

8. Could your business benefit from a waterborne freight transportation option (i.e., a public river terminal)? [assumes the stakeholder doesn't have a river terminal]

Yes.

9. Could your business benefit from a rail freight transportation option (i.e., a public rail terminal)? [assumes the stakeholder doesn't have a rail-served facility or doesn't utilize rail transportation]

Yes.

10. Could your business benefit from a freight hub and/or warehousing in the Havana area?

No.

11. Do you perceive a need for additional freight transportation options in the region?

Yes, see above.

12. If you could ask for one thing from the community or Port District to benefit your business, what would it be?

Another local processing plant would be helpful.

13. Do you have any other comments, questions, or concerns regarding freight transportation in the region that we can convey to the Port District on your behalf?

No.

Question Only for Potentially Rail-Served Facilities

1. It appears that it may be feasible to add rail service to your facility. Have you given that consideration or have plans to add a rail connection to your facility in the future? Why/why not?

Yes, they have given it consideration. Cost has been the factor holding them back.

Cargill Interview

General Questions

1. How are raw materials currently transported to your facility? Where are those raw materials currently coming from?
They are a grain elevator. They buy corn, grain, wheat from local farmers, shipped by semi, and ship it out on barge.
2. Are any of those raw materials currently transported to your facility in bulk? If so, how are they transported?
Yes, by barge.
3. Are finished or partially finished products shipped out from your facility?
No, they go to New Orleans to be exported.
 - a. How are they generally/typically transported?
N/A
 - b. Generally, where are they going?
N/A
4. What are your current freight transportation needs, issues, or constraints, including any related to real estate availability or infrastructure?
The first person interviewed said getting barges needed, and otherwise to ask operations. Operations said none. All they do is barges, which come straight from carrier.
5. Do you have any expansion plans that could increase freight traffic to or from your facility? Does labor pool availability impact these decisions?
No, they only ship on water.
6. Do you anticipate any future freight transportation needs, issues, or constraints that may inhibit your company's ability to grow?
No.
7. Can you identify any freight transportation system improvements in the Havana region, including Mason or Fulton Counties, that could benefit your business?
The first person interviewed said improved roads, from customer standpoint. Operations said no.
8. Could your business benefit from a waterborne freight transportation option (i.e., a public river terminal)? [assumes the stakeholder doesn't have a river terminal]
N/A
9. Could your business benefit from a rail freight transportation option (i.e., a public rail terminal)? [assumes the stakeholder doesn't have a rail-served facility or doesn't utilize rail transportation]
The first person said it would be beneficial, but hard to get close to the river. Operations said no.
10. Could your business benefit from a freight hub and/or warehousing in the Havana area?

No, they already warehouse their corn. Would need silos.

11. Do you perceive a need for additional freight transportation options in the region?

It is always good to expand, but what they have is good for what they do, so no.

12. If you could ask for one thing from the community or Port District to benefit your business, what would it be?

They did not have anything specific.

13. Do you have any other comments, questions, or concerns regarding freight transportation in the region that we can convey to the Port District on your behalf?

No.

Central Stone/Otter Creek Interview

General Questions

1. How are raw materials currently transported to your facility? Where are those raw materials currently coming from?
They are a rock supplier, with materials coming by truck. They could do barge.
2. Are any of those raw materials currently transported to your facility in bulk? If so, how are they transported?
Yes, by truck.
3. Are finished or partially finished products shipped out from your facility?
Yes, riprap.
 - a. How are they generally/typically transported?
By truck.
 - b. Generally, where are they going?
To construction projects in Illinois, Corps of Engineers, etc.
4. What are your current freight transportation needs, issues, or constraints, including any related to real estate availability or infrastructure?
None.
5. Do you have any expansion plans that could increase freight traffic to or from your facility? Does labor pool availability impact these decisions?
No.
6. Do you anticipate any future freight transportation needs, issues, or constraints that may inhibit your company's ability to grow?
No.
7. Can you identify any freight transportation system improvements in the Havana region, including Mason or Fulton Counties, that could benefit your business?
No.
8. Could your business benefit from a waterborne freight transportation option (i.e., a public river terminal)? [assumes the stakeholder doesn't have a river terminal]
There is no water access at Otter Creek, just at Florence.
9. Could your business benefit from a rail freight transportation option (i.e., a public rail terminal)? [assumes the stakeholder doesn't have a rail-served facility or doesn't utilize rail transportation]
Yes.
10. Could your business benefit from a freight hub and/or warehousing in the Havana area?
Possibly, he doesn't know what it would entail.
11. Do you perceive a need for additional freight transportation options in the region?

Not for them.

12. If you could ask for one thing from the community or Port District to benefit your business, what would it be?

He isn't sure.

13. Do you have any other comments, questions, or concerns regarding freight transportation in the region that we can convey to the Port District on your behalf?

No.

**Heidelberg Materials Interview
(formerly Hanson Aggregates)**

General Questions

1. How are raw materials currently transported to your facility? Where are those raw materials currently coming from?
Springfield, directly out of the ground. Peoria location receives material from Romeo IL straight out of barges.
2. Are any of those raw materials currently transported to your facility in bulk? If so, how are they transported?
Not to them in bulk. Sometimes transported out in bulk by truck.
3. Are finished or partially finished products shipped out from your facility?
No.
 - a. How are they generally/typically transported?
N/A
 - b. Generally, where are they going?
N/A
4. What are your current freight transportation needs, issues, or constraints, including any related to real estate availability or infrastructure?
Don't truck it out; up to customer.
5. Do you have any expansion plans that could increase freight traffic to or from your facility? Does labor pool availability impact these decisions?
No.
6. Do you anticipate any future freight transportation needs, issues, or constraints that may inhibit your company's ability to grow?
Don't know.
7. Can you identify any freight transportation system improvements in the Havana region, including Mason or Fulton Counties, that could benefit your business?
No.
8. Could your business benefit from a waterborne freight transportation option (i.e., a public river terminal)? [assumes the stakeholder doesn't have a river terminal]
Don't know.
9. Could your business benefit from a rail freight transportation option (i.e., a public rail terminal)? [assumes the stakeholder doesn't have a rail-served facility or doesn't utilize rail transportation]
Don't know.
10. Could your business benefit from a freight hub and/or warehousing in the Havana area?

Don't know.

11. Do you perceive a need for additional freight transportation options in the region?

No.

12. If you could ask for one thing from the community or Port District to benefit your business, what would it be?

More business.

13. Do you have any other comments, questions, or concerns regarding freight transportation in the region that we can convey to the Port District on your behalf?

No.

Hawkins Interview

General Questions

1. How are raw materials currently transported to your facility? Where are those raw materials currently coming from?

Don't receive raw materials locally. Comes out of MN and goes straight to customers. Industrial branches up there take raw material, sends them down in trucks.

2. Are any of those raw materials currently transported to your facility in bulk? If so, how are they transported?

Just sodium hypochlorite for local distribution.

3. Are finished or partially finished products shipped out from your facility?

He thinks "no" for MN.

- a. How are they generally/typically transported?

N/A

- b. Generally, where are they going?

N/A

4. What are your current freight transportation needs, issues, or constraints, including any related to real estate availability or infrastructure?

Doesn't know.

5. Do you have any expansion plans that could increase freight traffic to or from your facility? Does labor pool availability impact these decisions?

Doesn't know; upper management changes things without telling them.

6. Do you anticipate any future freight transportation needs, issues, or constraints that may inhibit your company's ability to grow?

Probably not. Maybe hard for trucks, maybe not, doesn't know. "I send them an email, they send me a truck."

7. Can you identify any freight transportation system improvements in the Havana region, including Mason or Fulton Counties, that could benefit your business?

None that he knows, most doesn't come out of IL for them. Road construction, but can't do much there.

8. Could your business benefit from a waterborne freight transportation option (i.e., a public river terminal)? [assumes the stakeholder doesn't have a river terminal]

No. Too small.

9. Could your business benefit from a rail freight transportation option (i.e., a public rail terminal)? [assumes the stakeholder doesn't have a rail-served facility or doesn't utilize rail transportation]

No. Again too small. Rail in MN. Cost more than benefit for them.

10. Could your business benefit from a freight hub and/or warehousing in the Havana area?

"Technically we are a warehouse, as far as anymore, maybe in the future."

11. Do you perceive a need for additional freight transportation options in the region?

No.

12. If you could ask for one thing from the community or Port District to benefit your business, what would it be?

Doesn't know, but indicated that the Havana Park District is one of their customers.

13. Do you have any other comments, questions, or concerns regarding freight transportation in the region that we can convey to the Port District on your behalf?

No.

Helena Chemical Interview

General Questions

1. How are raw materials currently transported to your facility? Where are those raw materials currently coming from?
Trucks, from all over, some off rivers/terminals.
2. Are any of those raw materials currently transported to your facility in bulk? If so, how are they transported?
Yes, truck and barge.
3. Are finished or partially finished products shipped out from your facility?
"I guess, we just fix them up."
 - a. How are they generally/typically transported?
Truck.
 - b. Generally, where are they going?
Farm fields.
4. What are your current freight transportation needs, issues, or constraints, including any related to real estate availability or infrastructure?
None for them company wide, just drivers.
5. Do you have any expansion plans that could increase freight traffic to or from your facility? Does labor pool availability impact these decisions?
No.
6. Do you anticipate any future freight transportation needs, issues, or constraints that may inhibit your company's ability to grow?
No.
7. Can you identify any freight transportation system improvements in the Havana region, including Mason or Fulton Counties, that could benefit your business?
No. New bridge eventually. Can tell it will need replacing soon.
8. Could your business benefit from a waterborne freight transportation option (i.e., a public river terminal)? [assumes the stakeholder doesn't have a river terminal].
N/A
9. Could your business benefit from a rail freight transportation option (i.e., a public rail terminal)? [assumes the stakeholder doesn't have a rail-served facility or doesn't utilize rail transportation]
No.
10. Could your business benefit from a freight hub and/or warehousing in the Havana area?
No.
11. Do you perceive a need for additional freight transportation options in the region?

Not currently.

12. If you could ask for one thing from the community or Port District to benefit your business, what would it be?

Not sure on the spot.

13. Do you have any other comments, questions, or concerns regarding freight transportation in the region that we can convey to the Port District on your behalf?

No.

Hitchcock Interview

General Questions

1. How are raw materials currently transported to your facility? Where are those raw materials currently coming from?

They have their own trucks.

2. Are any of those raw materials currently transported to your facility in bulk? If so, how are they transported?

Yes, by truck.

3. Are finished or partially finished products shipped out from your facility?

Depends on what goes where.

- a. How are they generally/typically transported?

Truck.

- b. Generally, where are they going?

Local.

4. What are your current freight transportation needs, issues, or constraints, including any related to real estate availability or infrastructure?

[At this point, interviewee indicated that they do not want to participate further.]

5. Do you have any expansion plans that could increase freight traffic to or from your facility? Does labor pool availability impact these decisions?

6. Do you anticipate any future freight transportation needs, issues, or constraints that may inhibit your company's ability to grow?

7. Can you identify any freight transportation system improvements in the Havana region, including Mason or Fulton Counties, that could benefit your business?

8. Could your business benefit from a waterborne freight transportation option (i.e., a public river terminal)? [assumes the stakeholder doesn't have a river terminal]

9. Could your business benefit from a rail freight transportation option (i.e., a public rail terminal)? [assumes the stakeholder doesn't have a rail-served facility or doesn't utilize rail transportation]

10. Could your business benefit from a freight hub and/or warehousing in the Havana area?

11. Do you perceive a need for additional freight transportation options in the region?

12. If you could ask for one thing from the community or Port District to benefit your business, what would it be?

13. Do you have any other comments, questions, or concerns regarding freight transportation in the region that we can convey to the Port District on your behalf?

Riden Farm Supply Interview

General Questions

1. How are raw materials currently transported to your facility? Where are those raw materials currently coming from?
She said that they do not transport much.
2. Are any of those raw materials currently transported to your facility in bulk? If so, how are they transported?
Yes, fertilizer is transported by truck.
3. Are finished or partially finished products shipped out from your facility?
Yes
 - a. How are they generally/typically transported?
Truck.
 - b. Generally, where are they going?
To the field.
4. What are your current freight transportation needs, issues, or constraints, including any related to real estate availability or infrastructure?
Lack of drivers.
5. Do you have any expansion plans that could increase freight traffic to or from your facility? Does labor pool availability impact these decisions?
No.
6. Do you anticipate any future freight transportation needs, issues, or constraints that may inhibit your company's ability to grow?
No.
7. Can you identify any freight transportation system improvements in the Havana region, including Mason or Fulton Counties, that could benefit your business?
No, they don't haul out very often.
8. Could your business benefit from a waterborne freight transportation option (i.e., a public river terminal)? [assumes the stakeholder doesn't have a river terminal]
Yes.
9. Could your business benefit from a rail freight transportation option (i.e., a public rail terminal)? [assumes the stakeholder doesn't have a rail-served facility or doesn't utilize rail transportation]
Maybe.
10. Could your business benefit from a freight hub and/or warehousing in the Havana area?
Depends on what it is. A fertilizer warehouse would be beneficial.
11. Do you perceive a need for additional freight transportation options in the region?

She doesn't know.

12. If you could ask for one thing from the community or Port District to benefit your business, what would it be?

Better roads and maintenance of roads.

13. Do you have any other comments, questions, or concerns regarding freight transportation in the region that we can convey to the Port District on your behalf?

No.

ATTACHMENT 3

Miscellaneous Documentation

Sunrise FS

A virtual meeting was held on 6/7 via Zoom with Jim Meinhart, the General Manager at Sunrise FS; and Jason Harrison, another employee at Sunrise FS.

- Sunrise FS currently has two main focuses: bank restoration/stabilization and increased storage capacity.
- They have the desire to add 25,000 tons of fertilizer storage (?)
- They are the only facility in the area who can unload dry bulk barges.
- Currently:
 - 45,000 tons of dry fertilizer are coming in.
 - 25,000(?) tons of liquid fertilizer are coming in.
 - 24-32 million bushels of grain are going out.
- They have no plans to get rail.
 - They would have to move tanks etc. to accommodate rail service on-site.
 - There are nearby entities both to the north and to the south that have rail.
 - Off-loading rail is not desired, but on-loading may be, specifically grain (not fertilizer).
 - Grain going down the river is exported. Grain going west needs rail.
 - We could talk to the Western Grain Marketing manager. Their facility in Adair loads 70-80 trains that are each 100 cars.
 - A rail loop takes up 160 acres. Sunrise does not have this available space (Sunrise owns 6.6 acres across the street).
- They already work with other companies, even competitors. He asked if we should look at what is available locally elsewhere.

Illinois & Midland Railroad (IMRR)

- Contact
 - Jennifer Tanner-Bostian; Director, Industrial Development
 - 304-644-7512; jennifer.tanner-bostian@gwrr.com
 - Their Northern Division, Springfield Subdivision goes through Havana.
- Do you have capacity in the Havana area?
 - Plenty of capacity.
- If yes to above, do you potentially have interest in additional tonnage on that line?
 - Yes, absolutely.
- Can you share with me the commodities that you primarily carry on that line currently?
 - It's primarily a coal line, but ag products, plastics, coke, minerals, stone, chemicals, lumber, and forest products are also moving on that line.
- Misc.
 - That line connects with all other Class I RR's except CSX.
 - Are you the appropriate contact?
 - For industrial development, yes. Not for operations questions/needs.
 - Requested copy of G&W industrial track design standards via email [subsequently received].

Jack Tanner Towing

A call was conducted on 6/9 with Evan Houghton of Jack Tanner Towing. This company services the Havana harbor. The following are highlights of the conversation.

- Harvest (Fall/Winter) is their busiest time of the year, with Summer typically being the slowest
- They have capacity/capability for additional business
 - They have 3 boats, 1 of which was added to the fleet just a couple years ago
 - They are planning to build a 4th boat, mostly due to the age of the other boats, not necessarily due to demand
- They typically move 80M to 90M bushels of grain outbound per year
 - They service all of the grain elevators in Havana
- Barge fleetings
 - Previously used cells at the power plant, but have been kicked off since the plant closure
 - Have fleetings space for ~120 barges, typically ~60 loaded and ~60 empties
 - All of their fleets are “bank tied” on the Fulton County side of the river
 - May need more fleetings space, if area tonnage increases significantly
 - He noted that the shoreline in Havana area is very dynamic – losing shoreline in some areas (as mentioned in the call with Sunrise FS) and sedimentation issues at other locations (he mentioned the power plant, and this is also an issue for Gracie at the Park District’s dock per communication from her); for this reason, finding good locations for additional fleetings will be challenging
- Potential opportunities
 - He agreed with our assessment that inbound commodities would be better than outbound to improve the current imbalance
 - Identified road salt, mulch, and scrap metal as commodities likely to be successful in Havana
 - Identified the facility just upriver from Sunrise FS as potentially looking to “get out” (referred to as “ADM South”); potential P3 or buy-out?

Greg Kelahan

From: Greg Kelahan
Sent: Thursday, May 11, 2023 12:51 PM
To: Watson, Brad
Subject: RE: Vistra Coal to Solar 2022 Development Plans for Retired Havana Power Plant Site

Brad:

Thanks for the reply and information. I will pass this along to the Havana Regional Port District.

Greg

From: Watson, Brad <Brad.Watson@luminant.com>
Sent: Thursday, May 11, 2023 11:34 AM
To: Greg Kelahan <GKelahan@hanson-inc.com>
Subject: RE: Vistra Coal to Solar 2022 Development Plans for Retired Havana Power Plant Site

Hello again Mr. Kelahan,

Thank you for the email and continuing interest in the Havana site.

At this time, we are in early-stage development for the Havana Energy Storage Facility and centering our attention on it only at the site. We expect construction to start in 2024 with the battery energy storage system going online in 2025. Since we're focused on drafting a design, we don't have anything to share as yet. But let's pick up the conversation in six months or so when we should know more.

Best,



Brad Watson
Senior Director of Community Affairs
brad.watson@vistracorp.com

o 214.875.8010 | m 214.356.6550

Vistra
Dynergy
Luminant
TXU Energy
Homefield Energy

From: Greg Kelahan <GKelahan@hanson-inc.com>
Sent: Wednesday, May 10, 2023 3:40 PM
To: Watson, Brad <Brad.Watson@luminant.com>
Subject: RE: Vistra Coal to Solar 2022 Development Plans for Retired Havana Power Plant Site

EXTERNAL EMAIL

Good afternoon, Brad.

I was one of the attendees at the coal-to-solar briefing last year regarding the retired Havana Power Plant site. Hanson is under contract with the Havana Regional Port District (HRPD) to conduct a market assessment and develop a master plan for potential river port development in Havana. I have a couple questions for you...

- Has a site plan been developed that shows what will be done with the various portions of the site? If so, is that something that you can share with me?
- Considering the site's existing in-river and riverfront infrastructure, would Vistra be willing to work with the HRPD on potential joint site redevelopment? If so, who would be the appropriate contact to initiate those discussions? You?

I look forward to hearing from you.

Kind regards,
Greg

J. Gregory Kelahan, PE, IMPE | *Lead Ports Engineer*

[Hanson Professional Services Inc.](#) | 1520 S Fifth St., Suite 220 | St. Charles, MO 63303

Direct: 314-942-5296; Cell: 561-306-6383 | [Facebook](#) | [Twitter](#) | [LinkedIn](#)

From: Watson, Brad <Brad.Watson@luminant.com>

Sent: Monday, January 24, 2022 2:38 PM

To: Bstadsholt.havana@gmail.com; j.kachanuk@havanail.gov; d-kosier@masondistricthospital.org; curt.oldfield@src.edu; mplater@havana126.net; admin@masoncountyyil.org; shanley@greaterpeoriaedc.org; L-bonnett@masondistricthospital.org; havanachamber@gmail.com; kpoler@masoncountyyil.org; countyclerk@masoncountyyil.gov; brownlk@illinois.edu; masoncountyydemocrat@gmail.com; Brenda Stadsholt <b.stadsholt@havanail.gov>; m.fliege@havanail.gov

Cc: Ferry, Jeffrey <Jeffrey.Ferry@vistracorp.com>; Atkins, Caroline <caroline.atkins@vistracorp.com>; Hilley, Kimberly <Kimberly.Hilley@txu.com>; Soer, Jared <Jared.Soer@vistracorp.com>; Juhl, Corey <Corey.Juhl@vistracorp.com>; Dietz, Kathryn <Kathryn.Dietz@vistracorp.com>; Patrick Skarr <ps@cullotonbauerluce.com>; countyclerk@masoncountyyil.org; Lori Wickman (recorder@masoncountyyil.gov) <recorder@masoncountyyil.gov>; Cari Meeker <treasurer@masoncountyyil.gov>; assessor@masoncountyyil.gov; Greg Kelahan <GKelahan@hanson-inc.com>; flybyewire454@protonmail.com; hammond4rep@macomb.com; jpatton@hrs.ilga.gov; senatortracy@adams.net; SFoiles@sgop.ilga.gov; MStieren@hrs.ilga.gov; Merrifield, Lisa C <lmorrisn@illinois.edu>; CJ Saladino <CSaladino@hanson-inc.com>

Subject: Vistra Coal to Solar 2022 Development Plans for Retired Havana Power Plant Site

Thanks to all of you who were able to join us for our Coal to Solar briefing on what's ahead next year for battery storage development at the retired Havana Power Plant site. Please find attached the PPT deck shown on the call. You are welcome to share it at will.

If you have any questions or suggestions, please let us know. We are excited about continuing to work with all of you and this new investment for the Havana site, Mason County and surrounding areas.



Brad Watson
Senior Director of Community Affairs
brad.watson@vistracorp.com

o 214.875.8010 | m 214.356.6550

Vistra
Dynergy
Luminant
TXU Energy
Homefield Energy

Confidentiality Notice: This email message, including any attachments, contains or may contain confidential information intended only for the addressee. If you are not an intended recipient of this message, be

advised that any reading, dissemination, forwarding, printing, copying or other use of this message or its attachments is strictly prohibited. If you have received this message in error, please notify the sender immediately by reply message and delete this email message and any attachments from your system.

Disclaimer

This entire e-mail may contain confidential information belonging to the sender which is legally privileged. This information is intended only for the use of the individual(s) or entity named above. If you are not the intended recipient you are hereby notified that any disclosure, copying, distribution or the taking of any action in reliance on the contents of this information is strictly prohibited. If you have received this e-mail in error please notify the sender immediately by e-mail and then delete this e-mail from your system.

Mail delivered by Hanson Professional Services Inc. mail system.

Confidentiality Notice: This email message, including any attachments, contains or may contain confidential information intended only for the addressee. If you are not an intended recipient of this message, be advised that any reading, dissemination, forwarding, printing, copying or other use of this message or its attachments is strictly prohibited. If you have received this message in error, please notify the sender immediately by reply message and delete this email message and any attachments from your system.

Appendix D

Stakeholder Presentation



Port Market Assessment & Master Plan

Havana Regional Port District (HRPD)

Local Government & Agency Stakeholders, Project Update Presentation

May 25, 2023 - Havana City Center



Project Purpose

- Understand current/anticipated regional freight transportation market conditions
- Determine current/anticipated needs within the regional freight transportation system
- Identify potential freight & economic development opportunities for HRPD
- Identify site(s) within the Havana Township for potential freight facility development
- Develop an appropriate site master plan

Project Overview

- Completed:
 - Project Kick-Off Meeting
 - Background Information Review
 - Freight Stakeholder Inventory
 - Freight Data Analysis
- Underway:
 - Freight Stakeholder Outreach
 - Local Government & Agency Stakeholder Outreach
- Forthcoming:
 - Site Selection & Master Planning
 - Draft Port Master Plan Report & Presentation (to HRPD Board)
 - Final Port Master Plan Report

Background Info Review

- IDOT's "IMTS Plan"
- Illinois State Freight Plan
- City of Havana Comprehensive Plan
- Various documents, plans, etc. related to...
 - Havana Power Plant
 - Heart of Illinois Regional Port District
 - Corn Belt Ports
 - M-55 Illinois-Gulf Marine Highway Initiative
- Other misc. reports

Project Study Areas

- Study Area A
 - Mason & Fulton Counties
- Study Area B
 - 14 counties within 50-mile radius, including Mason & Fulton Counties



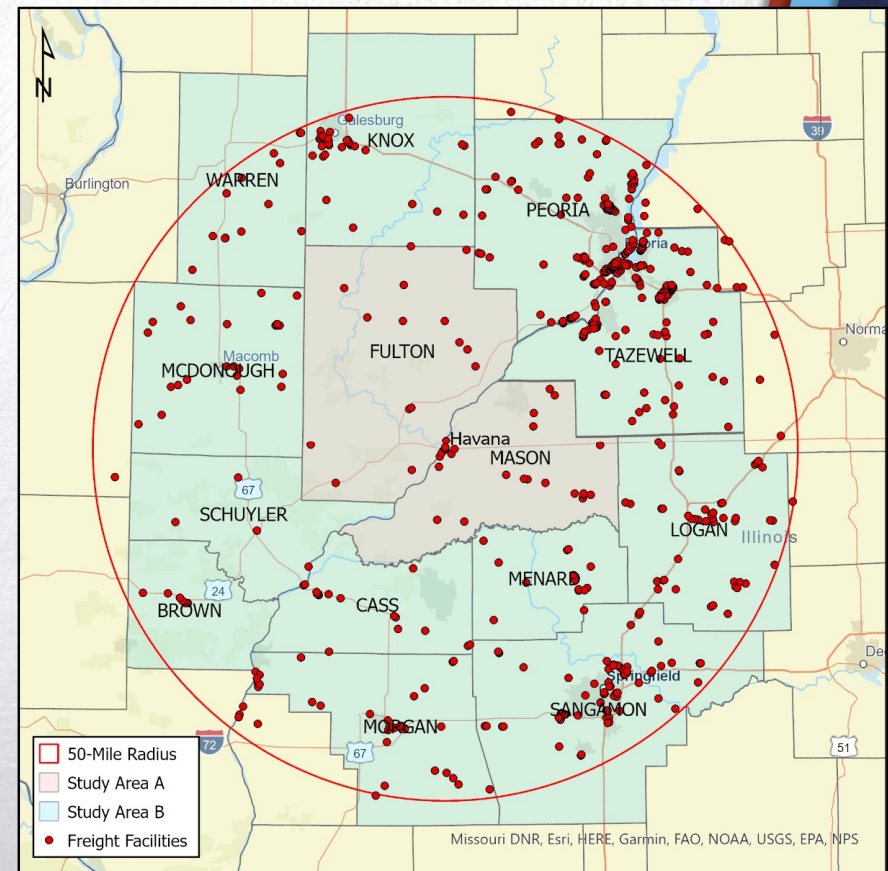
Freight Stakeholder Inventory

GIS database inventory of existing freight stakeholders within 50 miles of Havana that:

- Consume or produce commodities/products in significant volumes
- Carry a significant volume of freight
- Have a facility that is or could be readily served by a railroad
- Have a facility with truck un/loading bays
- Have a riverfront terminal capable of transloading commodities to/from barges

Freight Stakeholder Inventory

- 595 facilities inventoried
 - 40 within Study Area A
 - 555 within Study Area B (exclusively)
- 370 industrial facilities, 51 carriers, 149 distribution centers, 25 river terminals
- 98 facilities with rail access
- 138 with potential rail access
- 32 facilities with barge access
- 8 with potential barge access



Freight Data Analysis

- Air, Barge, & Truck Freight Data
 - S&P Global's Transearch database
 - USACE WCSC database supplemented barge data
- Rail Freight Data
 - US Surface Transportation Board (STB) waybill data
 - Data details are confidential; had to be generalized
- Analyzed freight moving into, out of, within, and through study areas
- Analyzed 2019 data and 2035 projections
- Note: Study Area A tonnage is included in Study Area B tonnage (i.e., SA-A is a subset of SA-B)

S&P Global
Market Intelligence



Freight Data Overview

Year	Mode	Study Area A			Study Area B		
		Tonnage	% of Total	Tonnage % Increase 2019 to 2035	Tonnage	% of Total	Tonnage % Increase 2019 to 2035
2019	Air	0	0%	---	> 10k	0%	---
	Barge	> 1M	2%	---	> 8M	3%	---
	Rail	> 42M	82%	---	> 120M	46%	---
	Truck	> 8M	16%	---	> 134.5M	51%	---
	Total	> 51.5M	---	---	> 263M	---	---
2035	Air	0	0%	---	> 20k	0%	52%
	Barge	> 1M	3%	-7%	> 9M	3%	16%
	Rail	> 32M	77%	-24%	> 105.5M	36%	-12%
	Truck	> 8M	20%	4%	> 175M	60%	30%
	Total	> 41.5M	---	-19%	> 290M	---	10%

Source: S&P Global, US Surface Transportation Board (STB), & Hanson. Notes: Truck tonnage excludes drayage of intermodal shipping containers to/from rail yards, drayage of air cargo to/from airports, and warehouse/distribution center tonnage; these are "secondary movements." Rail tonnage excludes intermodal shipping container tonnage, since these contain an unknown mix of commodities.

Air Freight Data Summary

Year	Freight with Study Area A...	Tonnage	% of Total	Total (tons)	% Increase 2019 to 2035	Freight with Study Area B...	Tonnage	% of Total	Total (tons)	% Increase 2019 to 2035
2019	Destination	0	---	0	---	Destination	6,963	47%	14,816	---
	Origin	0	---		---	Origin	7,853	53%		---
	O & D	0	---		---	O & D	0	---		---
	Pass-Thru	---	---		---	Pass-Thru	---	---		---
2035	Destination	0	---	0	---	Destination	10,192	45%	22,541	46%
	Origin	0	---		---	Origin	12,349	55%		57%
	O & D	0	---		---	O & D	0	---		---
	Pass-Thru	---	---		---	Pass-Thru	---	---		---

Source: S&P Global & Hanson. Note: Pass-Thru air freight tonnage is not feasible to determine using the Transearch database.

Air Freight Data “Take-Aways”

- Study Area A: None in 2019 or 2035
- Study Area B: Increase 52% (~7,700 tons) by 2035
 - Half of total air freight is commercial air cargo (UPS, FedEx, etc.)
 - Not likely a HRPD business opportunity
- Air freight is typically high value/low weight, opposite of barge freight
- Potential HRPD business opportunity if a company that uses air freight locates in the Havana vicinity & improvements are made to Havana Regional Airport

Barge Freight Data Summary

Year	Freight with Study Area A...	Tonnage	% of Total	Total (tons)	% Increase 2019 to 2035	Freight with Study Area B...	Tonnage	% of Total	Total (tons)	% Increase 2019 to 2035
2019	Destination	59,612	5%	1,252,979	---	Destination	890,129	11%	8,036,995	---
	Origin	1,193,367	95%		---	Origin	6,993,704	87%		---
	O & D	0	---		---	O & D	153,162	2%		---
	Pass-Thru	---	---		---	Pass-Thru	---	---		---
2035	Destination	78,564	7%	1,167,976	32%	Destination	1,193,006	13%	9,331,913	34%
	Origin	1,089,412	93%		-9%	Origin	7,875,009	84%		13%
	O & D	0	---		---	O & D	263,898	3%		72%
	Pass-Thru	---	---		---	Pass-Thru	---	---		---

Source: S&P Global & Hanson. Note: Pass-Thru barge freight tonnage is not feasible to determine using the Transearch database.

Huge Imbalance!
 (~ 40 barges inbound vs.
 ~800 barges outbound)

Barge Freight Data “Take-Aways”

- Study Area A: Decrease 7% (~85k tons) by 2035
- Study Area B: Increase 16% (~1.3M tons) by 2035
- Decrease in Grain exports likely due to increase in domestic consumption in various forms
- Decrease in Bituminous Coal likely due to power plant closures
- Inbound movements may have higher likelihood of success, due to current inbound/outbound tonnage imbalance

Potential Barge Opportunities

Study Area	Direction	Commodity Class	STCC	Tonnage					
				2019	2035	Increase	Total "New" Inbound	Total "New" Outbound	Total "New" Pass-Thru
A	Inbound	Potassium or Sodium Compound	2812	21,075	38,114	17,039	27,201	102,422	---
	Inbound	Fertilizers	2871	25,467	35,629	10,162			
	Outbound	Broken Stone or Riprap	1421	198,802	248,513	49,711			
	Outbound	Potassium or Sodium Compound	2812	65,196	117,907	52,711			
B	Inbound	Potassium or Sodium Compound	2812	73,562	132,576	59,014	229,966	344,925	---
	Inbound	Fertilizers	2871	291,225	462,177	170,952			
	Outbound	Broken Stone or Riprap	1421	679,335	849,206	169,871			
	Outbound	Gravel or Sand	1441	131,549	219,891	88,342			
	Outbound	Potassium or Sodium Compound	2812	107,249	193,961	86,712			

Source: S&P Global & Hanson; Inbound = Study Area A/B Destination; Outbound = Study Area A/B Origin; Study Area B tonnage includes Study Area A in most cases; Pass-Thru barge freight tonnage is not feasible to determine using the Transearch database.

18 barges

68 barges

Rail Freight Data Summary

Year	Freight with Study Area A...	Tonnage	% of Total	Total (tons)	% Increase 2019 to 2035	Freight with Study Area B...	Tonnage	% of Total	Total (tons)	% Increase 2019 to 2035
2019	Destination	> 2.5M	7%	> 42M	---	Destination	> 10.5M	9%	> 120M	---
	Origin	> 300k	1%		---	Origin	> 7M	6%		---
	O & D	0	---		---	O & D	> 5M	4%		---
	Pass-Thru	> 39M	93%		---	Pass-Thru	> 97M	81%		---
2035	Destination	> 2M	6%	> 32M	-28%	Destination	> 5M	5%	> 105.5M	-52%
	Origin	> 250k	1%		-23%	Origin	> 5M	5%		-25%
	O & D	0	---		---	O & D	> 2.5M	3%		-49%
	Pass-Thru	> 29.5M	93%		-24%	Pass-Thru	> 92M	87%		-5%

Source: S&P Global, US Surface Transportation Board (STB), & Hanson. Note: Excludes tonnage associated with intermodal shipping containers.

Note: Tonnes are generalized due to US STB confidentiality requirements.

Rail Freight Data “Take-Aways”

- Study Area A: Decrease 24% (>10M tons) by 2035
- Study Area B: Decrease 12% (>14M tons) by 2035
- Mostly pass-through freight
 - Likely not a potential business opportunity unless O/D is located just outside of Study Area A
- Decrease in tonnage mostly due to decrease in Bituminous Coal
- Decrease in Grain exports likely due to increase in domestic consumption in various forms

Potential Rail Opportunities

Study Area	Direction	Commodity Class	STCC	Tonnage					
				2019	2035	Increase	Total "New" Inbound	Total "New" Outbound	Total "New" Pass-Thru
A	Pass-Thru	Potassium or Sodium Compound	2812	> 150k	> 250k	> 100k	---	---	> 450k
	Pass-Thru	Fertilizers	2871	> 450k	> 800k	> 350k			
B	Inbound	Potassium or Sodium Compound	2812	> 300k	> 500k	> 200k	> 200k	> 100k	> 1.5M
	Outbound	Gravel or Sand	1441	> 100k	> 250k	> 100k			
	Pass-Thru	Potassium or Sodium Compound	2812	> 1M	> 2M	> 900k			
	Pass-Thru	Fertilizers	2871	> 1M	> 1.5M	> 750k			

Source: S&P Global, US Surface Transportation Board (STB), & Hanson; Inbound = Study Area A/B Destination; Outbound = Study Area A/B Origin; Study Area B tonnage includes Study Area A in most cases.

> 4k railcars

Truck Freight Data Summary

Year	Freight with Study Area A...	Tonnage	% of Total	Total (tons)	% Increase 2019 to 2035	Freight with Study Area B...	Tonnage	% of Total	Total (tons)	% Increase 2019 to 2035
2019	Destination	1,009,508	12%	8,110,707	---	Destination	21,211,604	16%	134,791,391	---
	Origin	2,882,924	36%		---	Origin	22,026,903	16%		---
	O & D	40,667	1%		---	O & D	3,604,459	3%		---
	Pass-Thru	4,177,608	52%		---	Pass-Thru	87,948,425	65%		---
2035	Destination	1,030,954	12%	8,415,455	2%	Destination	26,791,310	15%	175,314,875	26%
	Origin	2,890,558	34%		0%	Origin	24,797,376	14%		13%
	O & D	42,364	1%		4%	O & D	3,559,549	2%		-1%
	Pass-Thru	4,451,579	53%		7%	Pass-Thru	120,166,640	69%		37%

Source: S&P Global & Hanson; Note: Excludes truck drayage of intermodal shipping containers to/from rail yards, drayage of air cargo to/from airports, and warehouse/distribution center tonnage.

Truck Freight Data “Take-Aways”

- Study Area A: Increase 4% (~300k tons) by 2035
- Study Area B: Increase 30% (~40.5M tons) by 2035
- Mostly pass through
 - Greater than half of Study Area A tonnage
 - Around two-thirds of Study Area B tonnage
- Drayage (excluded)
 - Truck freight moving to/from rail yards or airports
 - Not likely a business opportunity for HRPD
- Warehouse/Distribution Centers (excluded)
 - Tonnage expected to increase significantly
 - Not likely a business opportunity for HRPD

Potential Truck Opportunities

Study Area	Direction	Commodity Class	STCC	Tonnage					
				2019	2035	Increase	Total "New" Inbound	Total "New" Outbound	Total "New" Pass-Thru
A	Inbound	Broken Stone or Riprap	1421	267,117	290,716	23,599	23,599	239,504	144,601
	Outbound	Gravel or Sand	1441	183,563	364,892	181,329			
	Outbound	Misc. Waste or Scrap	4029	34,118	92,293	58,175			
	Pass-Thru	Gravel or Sand	1441	148,920	206,281	57,361			
	Pass-Thru	Misc. Waste or Scrap	4029	55,198	142,438	87,240			
B	Inbound	Broken Stone or Riprap	1421	3,652,570	4,289,201	636,631	1,711,808	2,018,459	5,236,364
	Inbound	Misc. Waste or Scrap	4029	630,088	1,705,265	1,075,177			
	Outbound	Broken Stone or Riprap	1421	627,472	807,457	179,985			
	Outbound	Gravel or Sand	1441	1,688,944	2,750,168	1,061,224			
	Outbound	Misc. Waste or Scrap	4029	687,906	1,465,156	777,250			
	Pass-Thru	Broken Stone or Riprap	1421	3,797,673	4,327,944	530,271			
	Pass-Thru	Gravel or Sand	1441	2,672,181	2,860,536	188,355			
	Pass-Thru	Misc. Waste or Scrap	4029	3,126,439	7,644,177	4,517,738			

Source: S&P Global & Hanson; Inbound = Study Area A/B Destination; Outbound = Study Area A/B Origin; Study Area B tonnage includes Study Area A in most cases.

~950 trucks

~9.5k trucks

~5.8k trucks

Potential Opportunities Summary

- Air Freight – none likely
- Barge Freight
 - Focus on inbound commodities
 - Road salt, fertilizer, aggregates (stone, riprap, gravel, sand)
- Rail Freight
 - Focus on Study Area A pass-through commodities
 - Road salt, fertilizer, aggregates (gravel, sand)
- Truck Freight
 - Focus on Study Area A
 - Misc. waste/scrap, aggregates (stone, riprap, gravel, sand)

Freight Stakeholder Outreach

- Stakeholder identification based on Freight Facility Inventory & potential business opportunities identified through Freight Data Analysis
- 21 stakeholders identified
 - 18 industry/distribution stakeholders
 - 3 carrier-related stakeholders
- Conducting phone interviews
 - Underway
 - Anticipated completion within the next week or so
 - Too early to draw conclusions

Up Next - Site Selection

- All preliminary business opportunities involve dry bulk materials
 - Similar material handling requirements
- Any development should be multi-purpose
- Limited riverfront property within HRPD boundaries
 - Havana Park District?
- Potential Public/Private Partnership (P3)
 - Vistra/Dynegy (power plant site)?
 - Havana Dock & Rail?
 - Others?
- Any input from this stakeholder group is welcome!

THANK YOU!

Questions?

General project discussion...



Appendix E

Existing Site Conditions



Appendix F

Concept Plans



