

PHOTO CREDIT REFERENCES

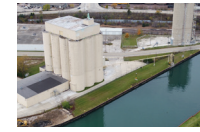
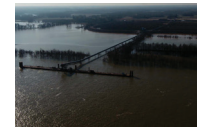
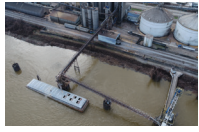
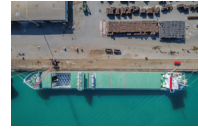
Source information for photo imagery included in this document.

Getty Stock Imagery
Source: Getty Images
www.gettyimages.com



Illinois Port District Imagery
Source: Illinois Port Association
<http://illinoisports.org/>







Illinois Department of Transportation (IDOT)
Source: IDOT Ferry Services
<http://www.idot.illinois.gov/travel-information/passenger-services/Ferry-Services/index>



Ozinga Bros., Inc.
Source: Ozinga Bros., Inc.
<https://www.ozinga.com/>



Jackson County Port District
Source: Jackson County, IL
<https://www.jacksoncounty-il.gov/>



Historic Imagery
Source: Chicago Past
<https://chicagopast.com/tagged/chicago-river>



Historic Imagery
Source: Illinois Marine Transportation Initiative
http://www.idot.illinois.gov/Assets/uploads/files/Transportation-System/Pamphlets-&-Brochures/Freight-Council/102918/ISFAC_Illinois_Marine_Transportation_October.pdf



Hokia Mounds State Historic Site
Source: painting by William R. Iseminger
<https://cahokiamounds.org/>



Eastland Disaster Historical Society

Source: Eastland Disaster Historical Society
<http://www.eastlanddisaster.org/>



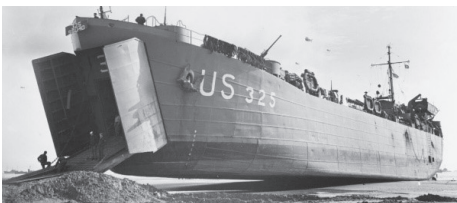
University of Illinois at Chicago

Source: UIC Library Archives
<https://uicarchives.library.uic.edu/history-of-uic/navy-pier-1914-1946/>



NavyTimes

Source: National Archives
<https://www.navytimes.com/news/your-navy/2019/06/06/the-unloved-unlovely-yet-indispensible-1st/>



Google Maps

Source: Google Maps
<https://www.google.com/maps/>



WSP Imagery

Source: Adam Miliszewski, Photographer

